

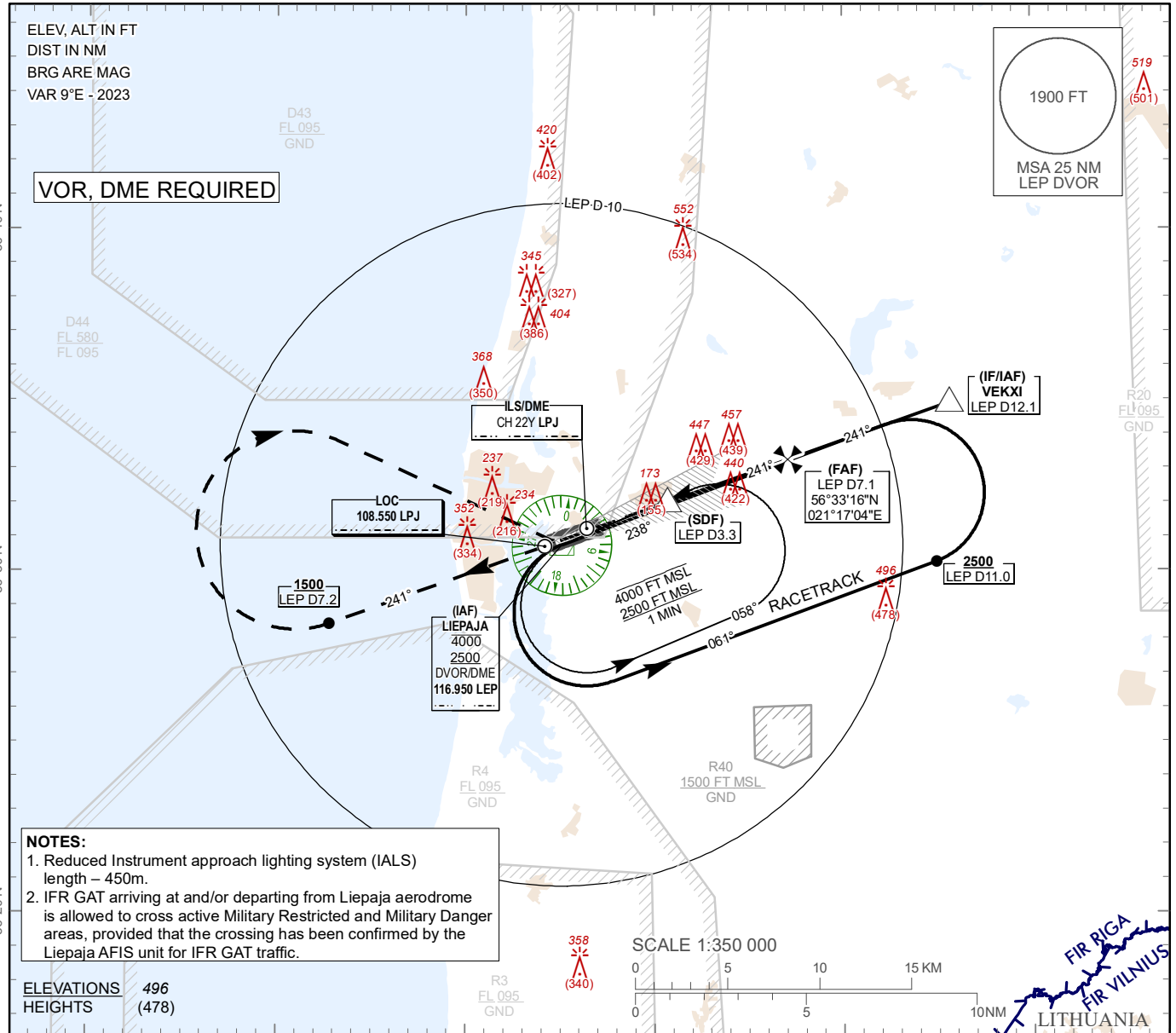
**INSTRUMENT
APPROACH
CHART - ICAO**

AERODROME ELEV 18 ft
HEIGHTS RELATED TO
AD - ELEV 18 ft

AFIS 129.400

LIEPAJA (EVLA)

LOC RWY 24



- NOTES:**
1. Reduced Instrument approach lighting system (IALS) length – 450m.
 2. IFR GAT arriving at and/or departing from Liepaja aerodrome is allowed to cross active Military Restricted and Military Danger areas, provided that the crossing has been confirmed by the Liepaja AFIS unit for IFR GAT traffic.

ELEVATIONS 496
HEIGHTS (478)

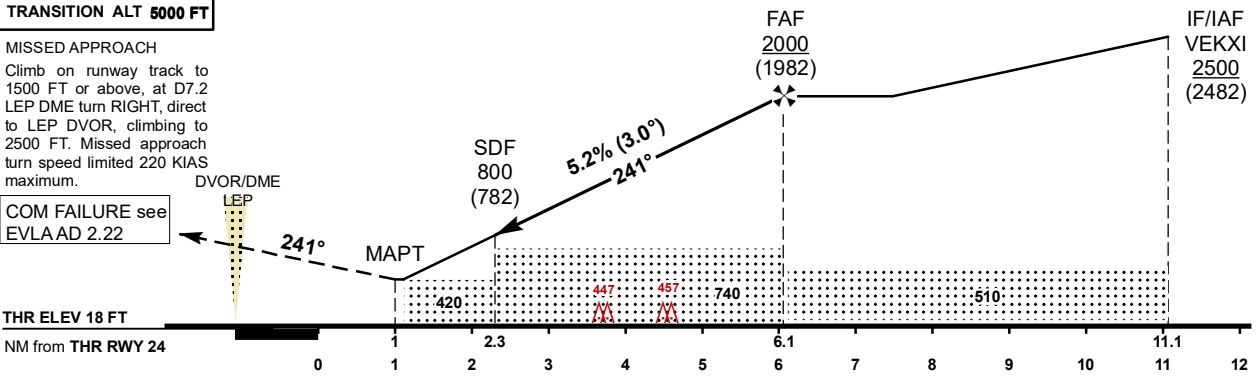
SCALE 1:350 000

TRANSITION ALT 5000 FT

MISSED APPROACH
Climb on runway track to 1500 FT or above, at D7.2 LEP DME turn RIGHT, direct to LEP DVOR, climbing to 2500 FT. Missed approach turn speed limited 220 KIAS maximum.

COM FAILURE see EVLAAD 2.22

THR ELEV 18 FT
NM from THR RWY 24



OCA (H)		A	B	C	D	DME LEP	7	6	5	4	3
Straight-in Approach	LOC	420(410)				DIST THR	6	5	4	3	2
						ALTITUDE	1970	1650	1340	1020	700
Circling		540 (520)		900 (890)		HEIGHT	(1952)	(1632)	(1322)	(1002)	(682)

Changes: D43 and D44 established, note added, editorial.

For data tabulation see verso

LIEPAJA (EVLA)

LOC RWY 24

AERONAUTICAL DATA TABULATION

LOC approach to RWY 24 from LEP DVOR/DME, VEKXI	
Fix/point	Coordinates
LEP DVOR/DME (IAF)	56°30'46.0"N 021°05'05.1"E
VEKXI (IF/IAF) LEP D12.10	56°34'55.3"N 021°25'35.7"E
LEP D7.10 (FAF)	56°33'15.6"N 021°17'04.4"E
LEP D3.33 (SDF)	56°32'00.2"N 021°10'39.5"E
LEP D2.03 (MAPT)	56°31'34.0"N 021°08'26.6"E
THR RWY 24	56°31'13.99"N 021°06'44.48"E
LPJ LOC	56°30'43.3"N 021°04'09.9"E
Final approach descent angle is 3.00°	