

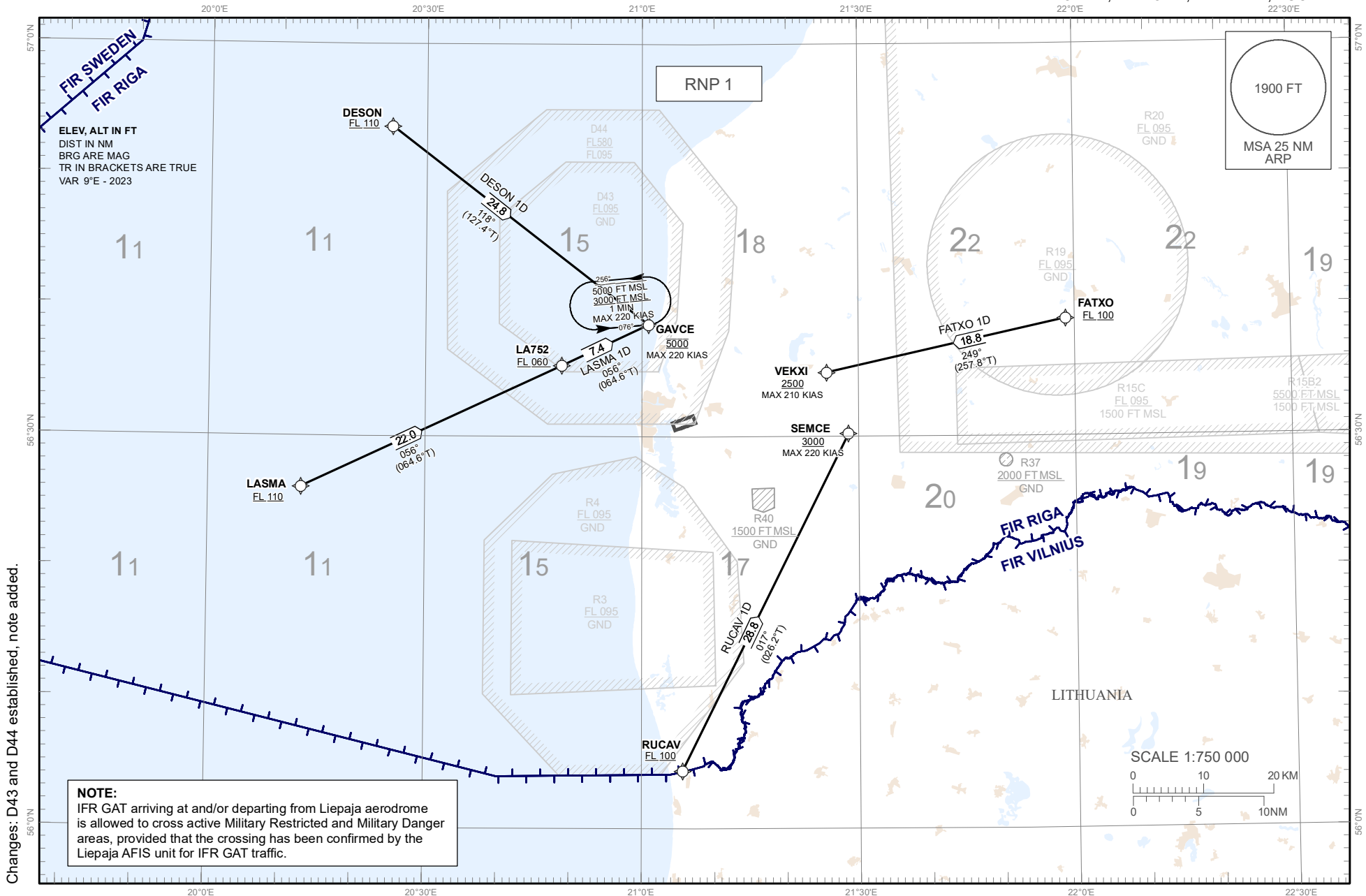
STANDARD ARRIVAL CHART - INSTRUMENT (STAR) - ICAO

TRANSITION ALTITUDE 5000 FT  
MAX 250 KIAS BELOW FL100

AFIS 129.400

LIEPAJA (EVLA)  
RNP RWY 24

DESON 1D, FATXO 1D, LASMA 1D, RUCAV 1D



**NOTE:**  
IFR GAT arriving at and/or departing from Liepaja aerodrome is allowed to cross active Military Restricted and Military Danger areas, provided that the crossing has been confirmed by the Liepaja AFIS unit for IFR GAT traffic.

Changes: D43 and D44 established, note added.

PROCEDURE CODING TABLES

DESON 1D										
Serial Number	Path Descriptor	Waypoint Identifier	Flyover	Course °M (°T)	Magnetic Variation (°)	Distance NM	Turn Direction	Altitude FT	Speed KT	Navigation Specification
10	IF	DESON	-	-	+9.0	-	-	+110 FL	-	RNP 1
20	TF	GAVCE	-	118(127.4)	+9.0	24.8	L	@5000	-220	RNP 1

FATXO 1D										
Serial Number	Path Descriptor	Waypoint Identifier	Flyover	Course °M (°T)	Magnetic Variation (°)	Distance NM	Turn Direction	Altitude FT	Speed KT	Navigation Specification
10	IF	FATXO	-	-	+9.0	-	-	+100 FL	-	RNP 1
20	TF	VEKXI	-	249(257.8)	+9.0	18.8	R	+2500	-210	RNP 1

LASMA 1D										
Serial Number	Path Descriptor	Waypoint Identifier	Flyover	Course °M (°T)	Magnetic Variation (°)	Distance NM	Turn Direction	Altitude FT	Speed KT	Navigation Specification
10	IF	LASMA	-	-	+9.0	-	-	+110 FL	-	RNP 1
20	TF	LA752	-	056(64.6)	+9.0	22.0	L	+060 FL	-	RNP 1
30	TF	GAVCE	-	056(64.6)	+9.0	7.4	L	@5000	-220	RNP 1

RUCAV 1D										
Serial Number	Path Descriptor	Waypoint Identifier	Flyover	Course °M (°T)	Magnetic Variation (°)	Distance NM	Turn Direction	Altitude FT	Speed KT	Navigation Specification
10	IF	RUCAV	-	-	+9.0	-	-	+100 FL	-	RNP 1
20	TF	SEMCE	-	017(26.2)	+9.0	28.8	R	+3000	-220	RNP 1

Leg sequence	Path Descriptor	Waypoint Identifier	Fly-over	Course °M(°T)	Magnetic Variation	Time (min)	Turn Direction	MNM Altitude FT	MAX Altitude FT	MAX Speed KT	Navigation Specification
HLDG	HM	GAVCE	Y	076(084.8)	+9.0	1	L	3000	5000	220	RNAV 1

WAYPOINT COORDINATES

WPT	COORD	
DESON	56°53'41.00"N	020°25'13.00"E
FATXO	56°38'57.67"N	021°58'49.37"E
GAVCE	56°38'34.60"N	021°00'55.90"E
LA752	56°35'25.85"N	020°48'51.90"E
LASMA	56°26'07.00"N	020°12'55.00"E
RUCAV	56°04'26.00"N	021°05'37.00"E
SEMCE	56°30'13.12"N	021°28'36.78"E
VEKXI	56°34'55.29"N	021°25'35.72"E