

STANDARD ARRIVAL CHART - INSTRUMENT (STAR) - ICAO

LIEPAJA (EVLA)

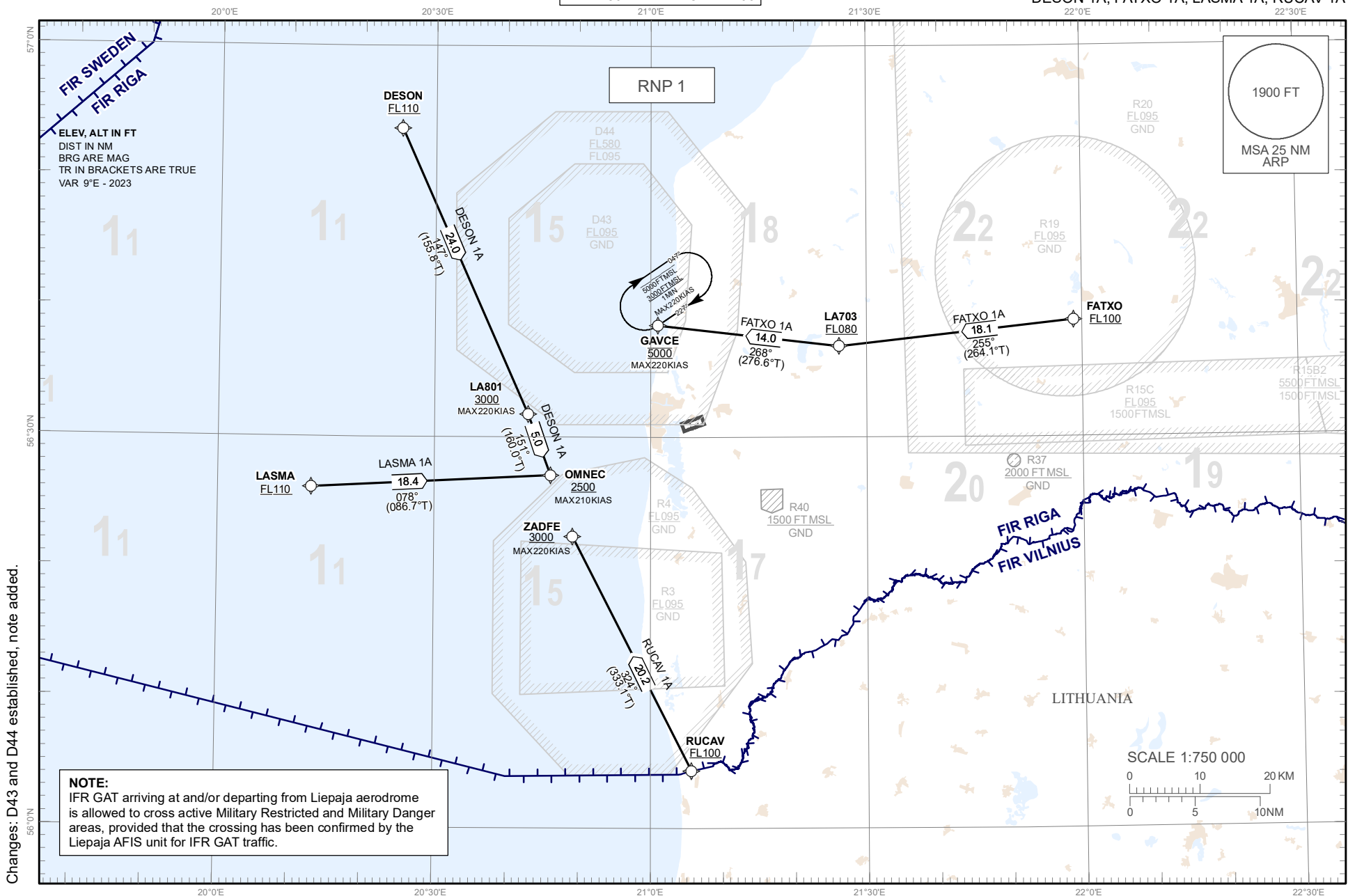
RNP RWY 06

TRANSITION ALTITUDE 5000 FT

AFIS 129.400

MAX 250 KIAS BELOW FL100

DESON 1A, FATXO 1A, LASMA 1A, RUCAV 1A



Changes: D43 and D44 established, note added.

PROCEDURE CODING TABLES

DESON 1A										
Serial Number	Path Descriptor	Waypoint Identifier	Flyover	Course °M (°T)	Magnetic Variation (°)	Distance NM	Turn Direction	Altitude FT	Speed KT	Navigation Specification
10	IF	DESON	-	-	+9.0	-	-	+110 FL	-	RNP 1
20	TF	LA801	-	147(155.8)	+9.0	24.0	R	+3000	-220	RNP 1
30	TF	OMNEC	-	151(160)	+9.0	5.0	R	+2500	-210	RNP 1

FATXO 1A										
Serial Number	Path Descriptor	Waypoint Identifier	Flyover	Course °M (°T)	Magnetic Variation (°)	Distance NM	Turn Direction	Altitude FT	Speed KT	Navigation Specification
10	IF	FATXO	-	-	+9.0	-	-	+100 FL	-	RNP 1
20	TF	LA703	-	255(264.1)	+9.0	18.1	R	+080 FL	-	RNP 1
30	TF	GAVCE	-	268(276.6)	+9.0	14.0	R	@5000	-220	RNP 1

LASMA 1A										
Serial Number	Path Descriptor	Waypoint Identifier	Flyover	Course °M (°T)	Magnetic Variation (°)	Distance NM	Turn Direction	Altitude FT	Speed KT	Navigation Specification
10	IF	LASMA	-	-	+9.0	-	-	+110 FL	-	RNP1
20	TF	OMNEC	-	078(086.7)	+9.0	18.4	R	+2500	-210	RNP 1

RUCAV 1A										
Serial Number	Path Descriptor	Waypoint Identifier	Flyover	Course °M (°T)	Magnetic Variation (°)	Distance NM	Turn Direction	Altitude FT	Speed KT	Navigation Specification
10	IF	RUCAV	-	-	+9.0	-	-	+100 FL	-	RNP1
20	TF	ZADFE	-	324(333.1)	+9.0	20.2	L	+3000	-220	RNP 1

Leg sequence	Path Descriptor	Waypoint Identifier	Fly-over	Course °M(°T)	Magnetic Variation	Time (min)	Turn Direction	MNM Altitude FT	MAX Altitude FT	MAX Speed KT	Navigation Specification
HLDG	HM	GAVCE	Y	227(235.7)	+9.0	1	R	3000	5000	220	RNAV 1

WAYPOINT COORDINATES

WPT	COORD	
DESON	56°53'41.00"N	020°25'13.00"E
FATXO	56°38'57.67"N	021°58'49.37"E
GAVCE	56°38'34.60"N	021°00'55.90"E
LA703	56°37'01.05"N	021°26'10.64"E
LA801	56°31'47.94"N	020°42'59.09"E
LASMA	56°26'07.00"N	020°12'55.00"E
OMNEC	56°27'06.65"N	020°46'03.98"E
RUCAV	56°04'26.00"N	021°05'37.00"E
ZADFE	56°22'25.28"N	020°49'08.09"E