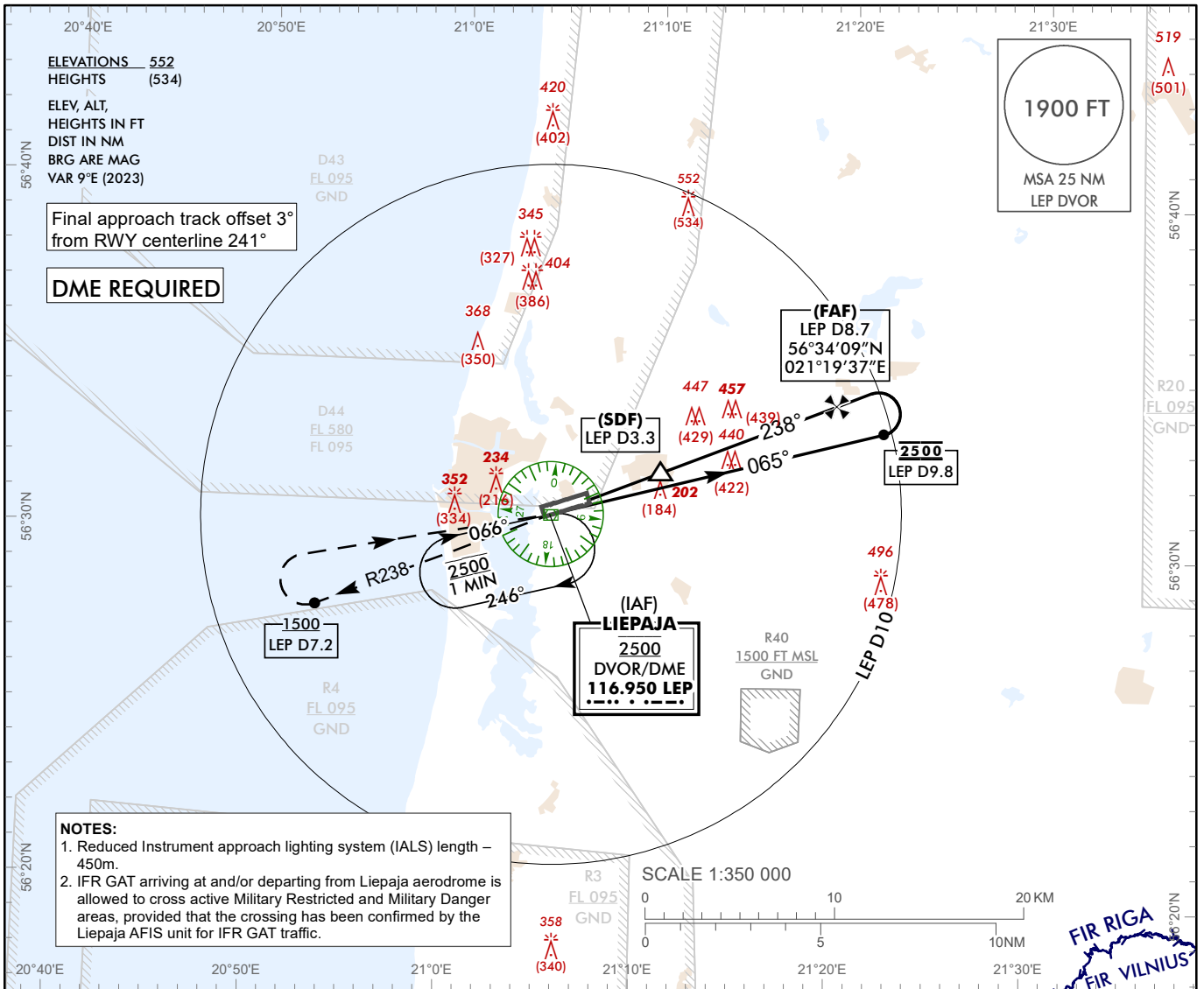


INSTRUMENT APPROACH CHART – ICAO

AERODROME ELEV 18 ft
 HEIGHTS RELATED TO AD - ELEV 18 ft

AFIS 129.400

LIEPAJA (EVLA)
VOR Z RWY 24
(ACFT CAT A)



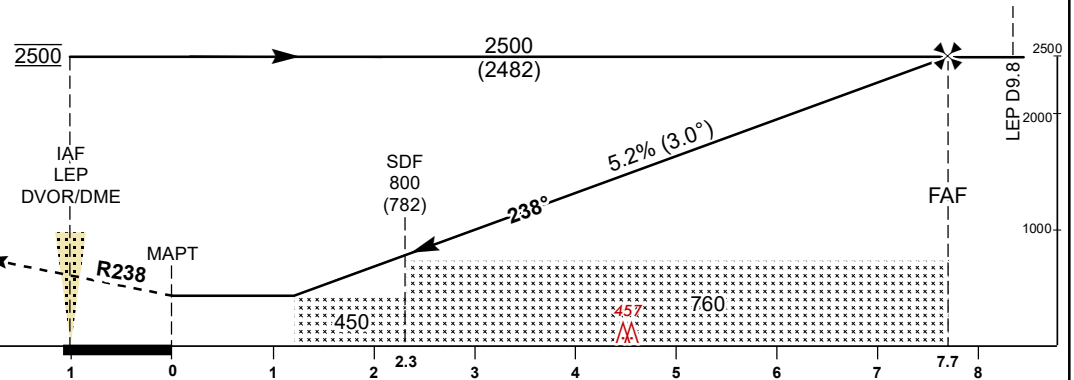
TRANSITION ALT 5000

MISSED APPROACH
 Climb on R238 to 1500 or above, at D7.2 LEP DME turn RIGHT direct to LEP DVOR climbing to 2500.

COM FAILURE see EVLA AD 2.22

THR ELEV 18

NM from THR RWY 24



| OCA (H) | | A | B | C | D | DME LEP | 8 | 7 | 6 | 5 | 4 | 3 |
|----------------------|---------|-----------|---|---|---|---|--------|--------|--------|--------|-------|-------|
| Straight-in Approach | VOR/DME | 450 (430) | | | | ALTITUDE | 2270 | 1960 | 1640 | 1320 | 1010 | 690 |
| | | | | | | HEIGHT | (2252) | (1942) | (1622) | (1302) | (992) | (672) |
| Circling | | 540 (520) | | | | Timing not authorized for defining the MAPT | | | | | | |

For data tabulation see verso

Changes: D43, D44 established, note added.

LIEPAJA (EVLA)
VOR Z RWY 24
(ACFT CAT A)

AERONAUTICAL DATA TABULATION

| VOR approach to RWY 24 from LEP DVOR/DME | |
|--|------------------------------|
| Fix/point | Coordinates |
| LEP DVOR/DME (IAF) | 56°30'46.0"N 021°05'05.1"E |
| LEP D8.73 (FAF) | 56°34'09.4"N 021°19'36.6"E |
| LEP D3.35 (SDF) | 56°32'04.2"N 021°10'38.9"E |
| LEP D1.03 (MAPT) | 56°31'10.0"N 021°06'47.3"E |
| THR RWY 24 | 56°31'13.99"N 021°06'44.48"E |
| Final approach descent angle is 2.98° | |