

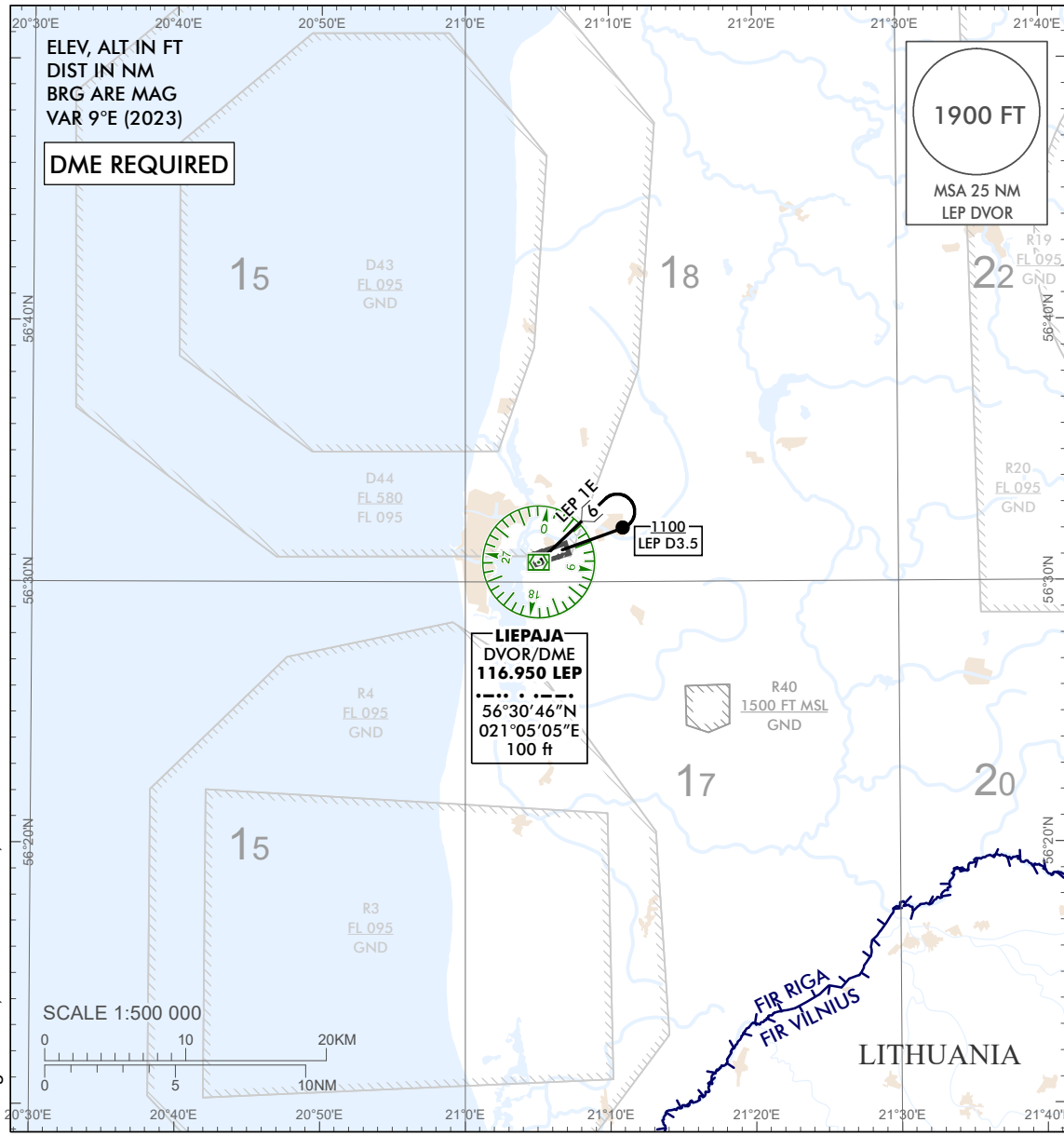
**STANDARD DEPARTURE CHART –
INSTRUMENT (SID) – ICAO**

TRANSITION ALTITUDE
5000 ft

AFIS 129.400

**LIEPAJA (EVLA)
RWY 06
(CAT A)**

LEP 1E



Coded designator	Plain language designator / Routing	Procedure Design Gradient (PDG) & Altitudes
LEP 1E	LIEPAJA ONE ECHO DEPARTURE Climb on runway track. At 3.5 DME LEP at or above 1100 FT turn left to LEP DVOR climbing to 2500 FT.	After TP required PDG 4.0% to 2500 FT.

Changes: D43, D44 established, note added.

NOTE:
IFR GAT arriving at and/or departing from Liepaja aerodrome is allowed to cross active Military Restricted and Military Danger areas, provided that the crossing has been confirmed by the Liepaja AFIS unit for IFR GAT traffic.

INTENTIONALLY LEFT BLANK