

INSTRUMENT APPROACH CHART - ICAO

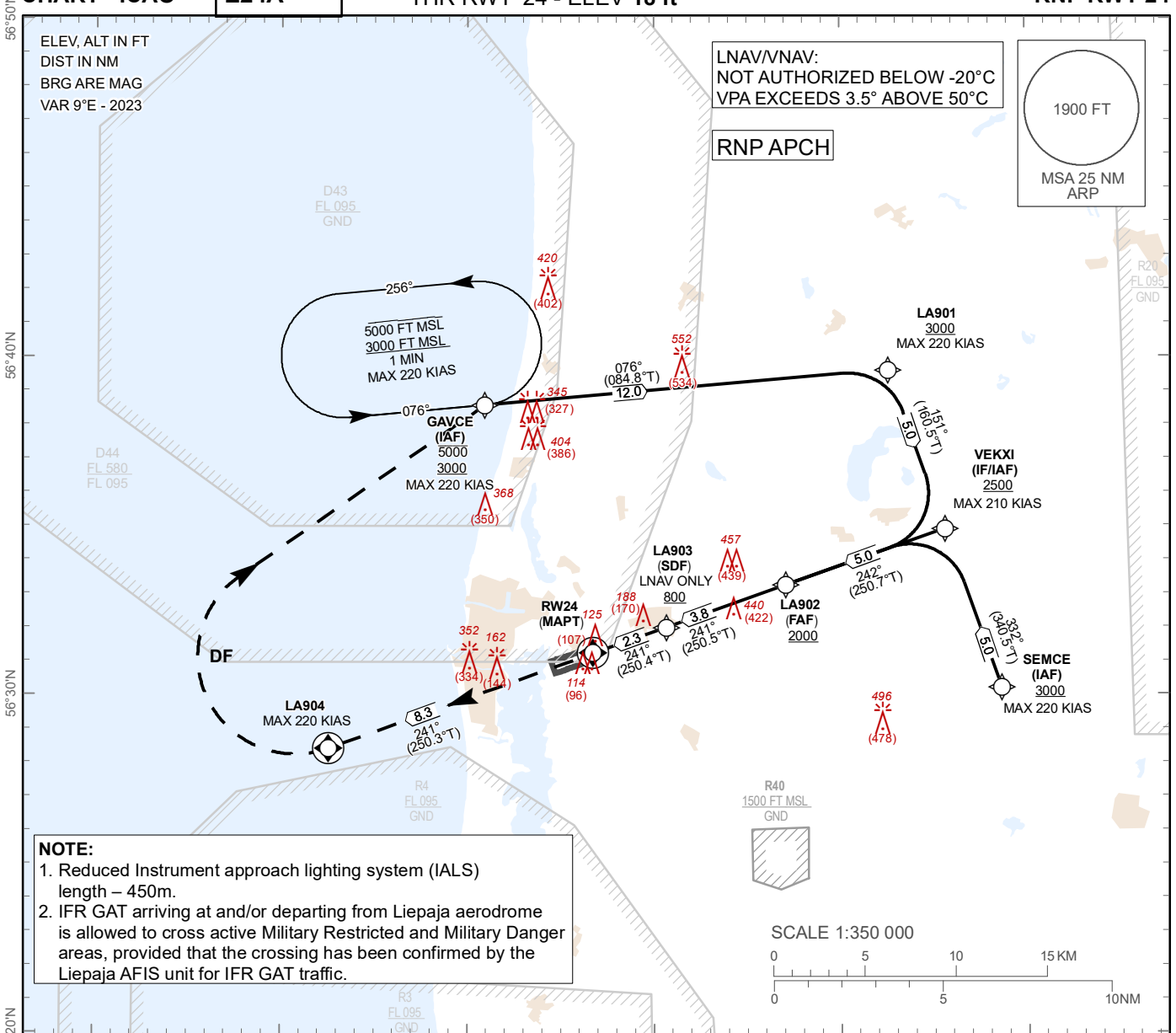
SBAS CH 57047 E24A

AERODROME ELEV 18 ft
HEIGHTS RELATED TO THR RWY 24 - ELEV 18 ft

AFIS 129.400

LIEPAJA (EVLA)

RNP RWY 24



NOTE:

1. Reduced Instrument approach lighting system (IALS) length – 450m.
2. IFR GAT arriving at and/or departing from Liepaja aerodrome is allowed to cross active Military Restricted and Military Danger areas, provided that the crossing has been confirmed by the Liepaja AFIS unit for IFR GAT traffic.

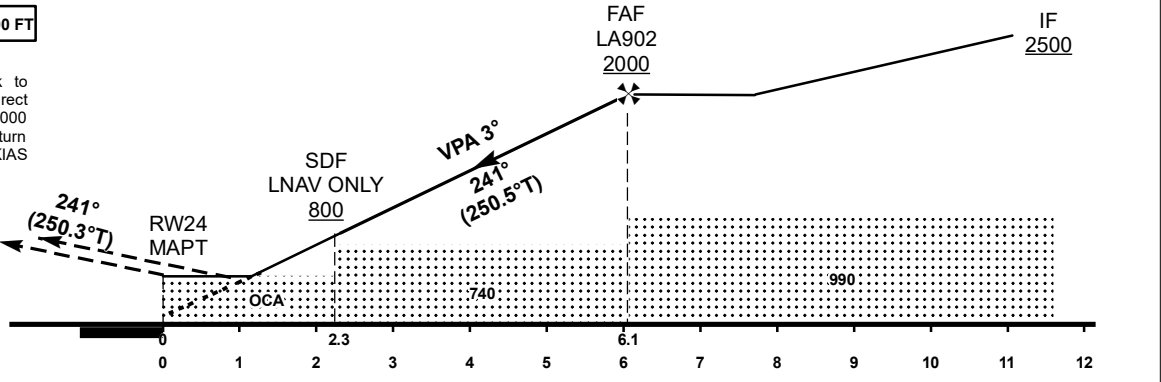
TRANSITION ALT 5000 FT

MISSED APPROACH
 Climb on runway track to LA904, then turn right, direct to GAVCE, climbing to 3000 FT. Missed approach turn speed limited 220 KIAS maximum.

COM FAILURE see EVLA AD 2.22

TCH 50

THR ELEV 18 FT
 NM from THR RWY 24



OCA (H)		A	B	C	D
Straight-in Approach	LNAV	440(420)			
	LNNAV/VNAV	255(237)	267(249)	275(258)	286(268)
	LPV	244(226)	256(238)	264(247)	274(257)

DIST THR	6	5	4	3	2
ALT	1980	1660	1340	1030	710

GS	kt	80	100	120	140	160	180
Rate of descent	ft/min	420	530	640	740	850	960
FAF-MAPT 3° (5.2%)							

Changes: D43 and D44 established, note added, editorial.

For data tabulation see verso

LIEPAJA (EVLA) RNP RWY 24	SBAS CH 57047 E24A	AERODROME ELEV 18 ft HEIGHTS RELATED TO THR RWY 24 - ELEV 18 ft	INSTRUMENT APPROACH CHART – ICAO
--	---	--	---

TABULAR DESCRIPTION

RNP RWY 24											
Serial Number	Path Descriptor	Waypoint Identifier	Fly-over	Course °M(T)	Magnetic Variation	Distance (NM)	Turn Direction	Altitude (FT)	Speed (KT)	VPA (°) / TCH (FT)	Navigation Specification
010	IF	SEMCE	-	-	+9.0	-	-	+3000	-220	-	RNAV 1
020	TF	VEKXI	-	332(340.5)	+9.0	5.0	L	+2500	-210	-	RNAV 1
010	IF	GAVCE	-	-	+9.0	-	-	+3000/-5000	-220	-	RNAV 1
020	TF	LA901	-	076(084.8)	+9.0	12.0		+3000	-220		RNAV 1
030	TF	VEKXI	-	151(160.5)	+9.0	5.0	R	+2500	-210	-	RNAV 1
010	IF	VEKXI	-	-	+9.0	-	-	+2500	-210	-	RNAV 1
010	IF	VEKXI	-	-	+9.0	-	-	+2500	-210	-	RNAV 1
020	TF	LA902	-	242(250.7)	+9.0	5.0	-	+2000	-	-	RNP APCH
030	TF	LA903	-	241(250.5)	+9.0	3.8	-	+800*	-	-	RNP APCH
040	TF	RW24	Y	241(250.4)	+9.0	2.3	-	@67	-	-3.0/50	RNP APCH
050	CF	LA904	Y	241(250.3)	+9.0	8.3	-	-	-220	-	RNP APCH
060	DF	GAVCE	-	-		-	R	+3000	-220	-	RNAV 1
* LNAV ONLY											
Serial Number	Path Descriptor	Waypoint Identifier	Fly-over	Course °M(T)	Magnetic Variation	Time (min)	Turn Direction	MNM Altitude FT	MAX Altitude FT	MAX Speed KT	Navigation Specification
070	HM	GAVCE	Y	076(084.8)	+9.0	1	L	3000	5000	220	RNAV 1

WAYPOINT LIST

RNP RWY 24		
Waypoint Identifier	Coordinates	
SEMCE	56°30'13.12"N	021°28'36.78"E
VEKXI	56°34'55.29"N	021°25'35.72"E
LA902	56°33'15.65"N	021°17'04.40"E
GAVCE	56°38'34.60"N	021°00'55.90"E
LA901	56°39'37.46"N	021°22'34.26"E
LA903	56°32'00.35"N	021°10'39.36"E
RW24	56°31'13.99"N	021°06'44.48"E
LA904	56°28'25.01"N	020°52'34.89"E

FAS DATA BLOCK

INPUT DATA

Operation Type	0
SBAS Provider	1 (EGNOS)
Airport Identifier	EVLA
Runway	24
Runway Letter	0 (None)
Approach Performance Designator	0
Route Indicator	
Reference Path Data Selector	0
Reference Path Identifier	E24A
LTP/FTP Latitude	563113.9885N
LTP/FTP Longitude	0210644.4755E
LTP/FTP Ellipsoidal Height (metres)	29.2
FPAP Latitude	563046.6640N
Delta FPAP Latitude (seconds)	-27.3245
FPAP Longitude	0210426.6910E
Delta FPAP Longitude (seconds)	-137.7845
Threshold Crossing Height	15.4
TCH Units Selector	1 (meters)
Glidepath Angle (degrees)	3.00
Course Width (metres)	105.00
Length Offset (metres)	504
HAL (metres)	40.0
VAL (metres)	35.0

OUTPUT DATA

Data Block	10 01 0C 16 05 18 00 00 01 34 32 05 89 88 41 18 F7 78 0F 09 24 15 87 2A FF 8F CB FB 34 81 2C 01 64 3F C8 AF EE 69 BB 4D
Calculated CRC Value	EE69BB4D

REQUIRED ADDITIONAL DATA

ICAO Code	EV
LTP/FTP Orthometric Height (metres)	5.4

EUROCONTROL FAS DB tool Version 3.2.0