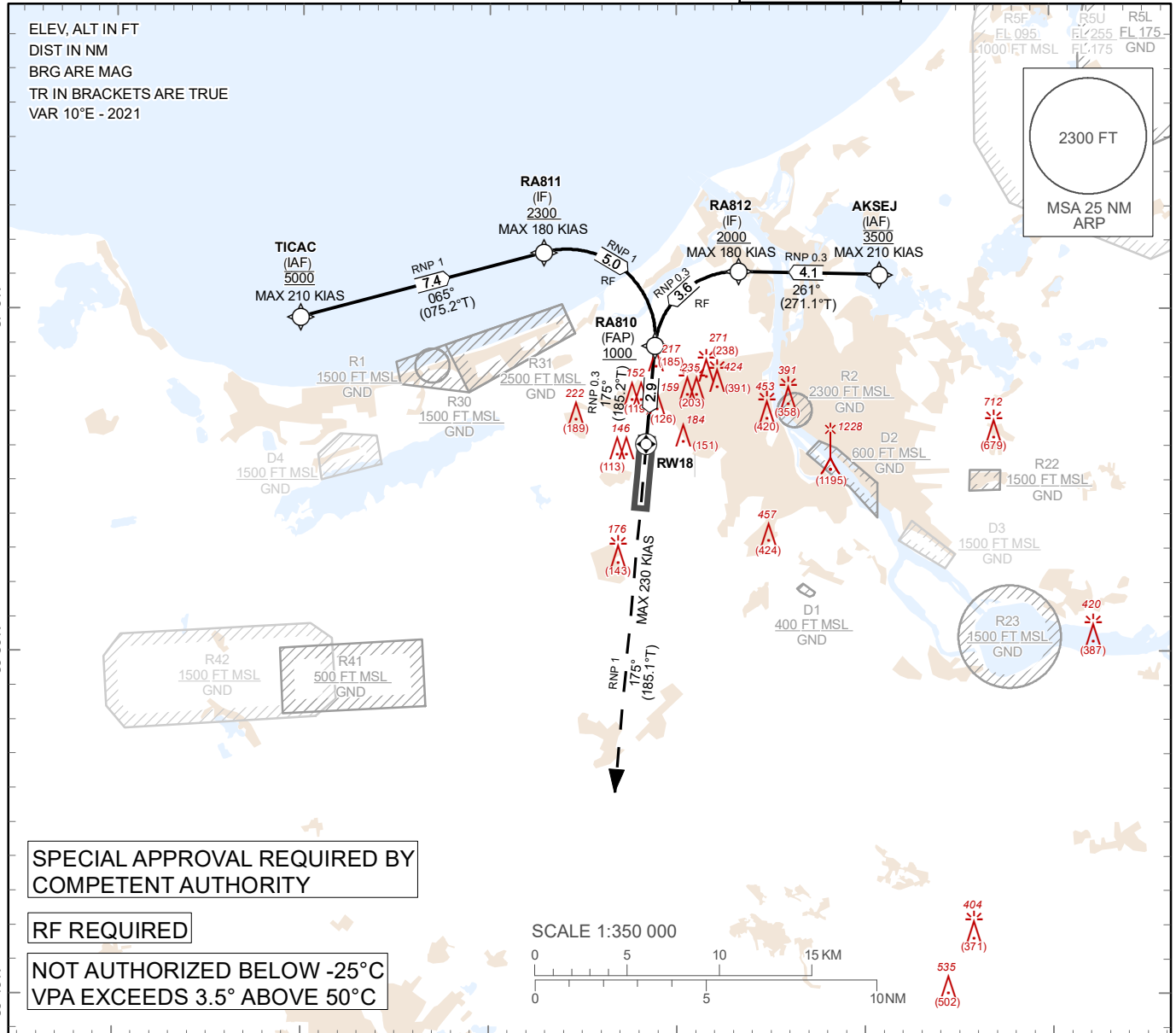


**INSTRUMENT
APPROACH
CHART – ICAO**

AERODROME ELEV 37 ft
**HEIGHTS RELATED TO
THR RWY 18 - ELEV 33 ft**

APP 129.925
134.850 (HX)
TWR 118.105
ATIS 120.180

RIGA (EVRA)
RNP Z RWY 18 (AR)



SPECIAL APPROVAL REQUIRED BY
COMPETENT AUTHORITY

RF REQUIRED

NOT AUTHORIZED BELOW -25°C
VPA EXCEEDS 3.5° ABOVE 50°C

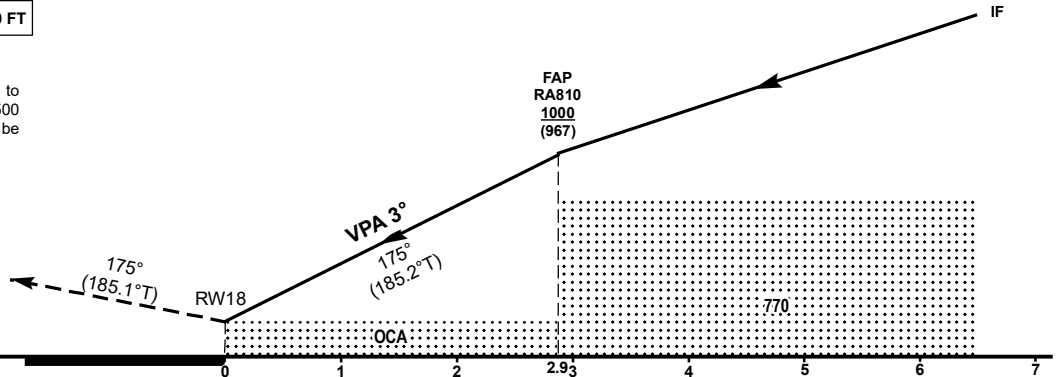
TRANSITION ALT 5000 FT

MISSED APPROACH
Climb on runway track to 2500, after passing 1500 radar vectoring will be provided

COM FAILURE see
EVRA AD 2.22

RDH 52

THR18 ELEV 33 FT
NM from THR RWY 18



OCA (H)	A	B	C	D
RNP 0.3	309 (276)	321 (288)	329 (296)	340 (307)

DIST THR	2	1
ALT	721	403
HGT	(688)	(370)

GS	kt	80	100	120	140	160	180
Rate of descent (5.2%)	ft/min	420	530	640	740	850	960

For data tabulation see verso

Changes: procedure updated, R41, R42 established.

RIGA (EVRA)

AERONAUTICAL DATA TABULATION

INSTRUMENT
APPROACH
CHART – ICAO

RNP Z RWY 18 (AR)

TABULAR DESCRIPTION

RNP Z RWY 18 (AR)											
Serial Number	Path Descriptor	Waypoint Identifier	Flyover	Course °M(°T)	Magnetic Variation(°)	Distance NM	Turn Direction	Altitude FT	Speed KT	VPA (°)/TCH (FT)	Navigation Specification
10	IF	AKSEJ	-	-	-	-	-	@3500	-210	-	RNP 0.3
20	TF	RA812	-	261 (271.1)	+10.0	4.1	-	+2000	-180	-3.4	RNP 0.3
30	RF Centre: RA821 r = 2.4 NM	RA810	-	261 (271.2)	+10.0	3.6	L	+1000	-	-2.6	RNP 0.3
10	IF	TICAC	-	-	-	-	-	@5000	-210	-	RNP 1
20	TF	RA811	-	065 (075.2)	+10.0	7.4	-	+2300	-180	-3.5	RNP 1
30	RF Centre: RA820 r = 2.6 NM	RA810	-	065 (075.1)	+10.0	5.0	R	+1000	-	-2.5	RNP 1
40	TF	RW18	Y	175 (185.2)	+10.0	2.9	-	@85	-	-3.0/52	RNP 0.3
50	CA	-	-	175 (185.1)	+10.0	-	-	@2500	-230	+1.4	RNP 1

WAYPOINT LIST

RNP Z RWY 18 (AR)		
Waypoint Identifier	Coordinates	
AKSEJ	57°01'03.24"N	024°10'50.30"E
RA812	57°01'08.23"N	024°03'18.89"E
RA810	56°58'57.60"N	023°58'51.42"E
TICAC	56°59'48.40"N	023°39'54.20"E
RA811	57°01'41.94"N	023°52'53.96"E
RW18	56°56'06.25"N	023°58'23.08"E
RF Arc Centre Identifier	Coordinates	
RA821	56°58'44.58"N	024°03'13.50"E
RA820	56°59'11.53"N	023°54'07.44"E