

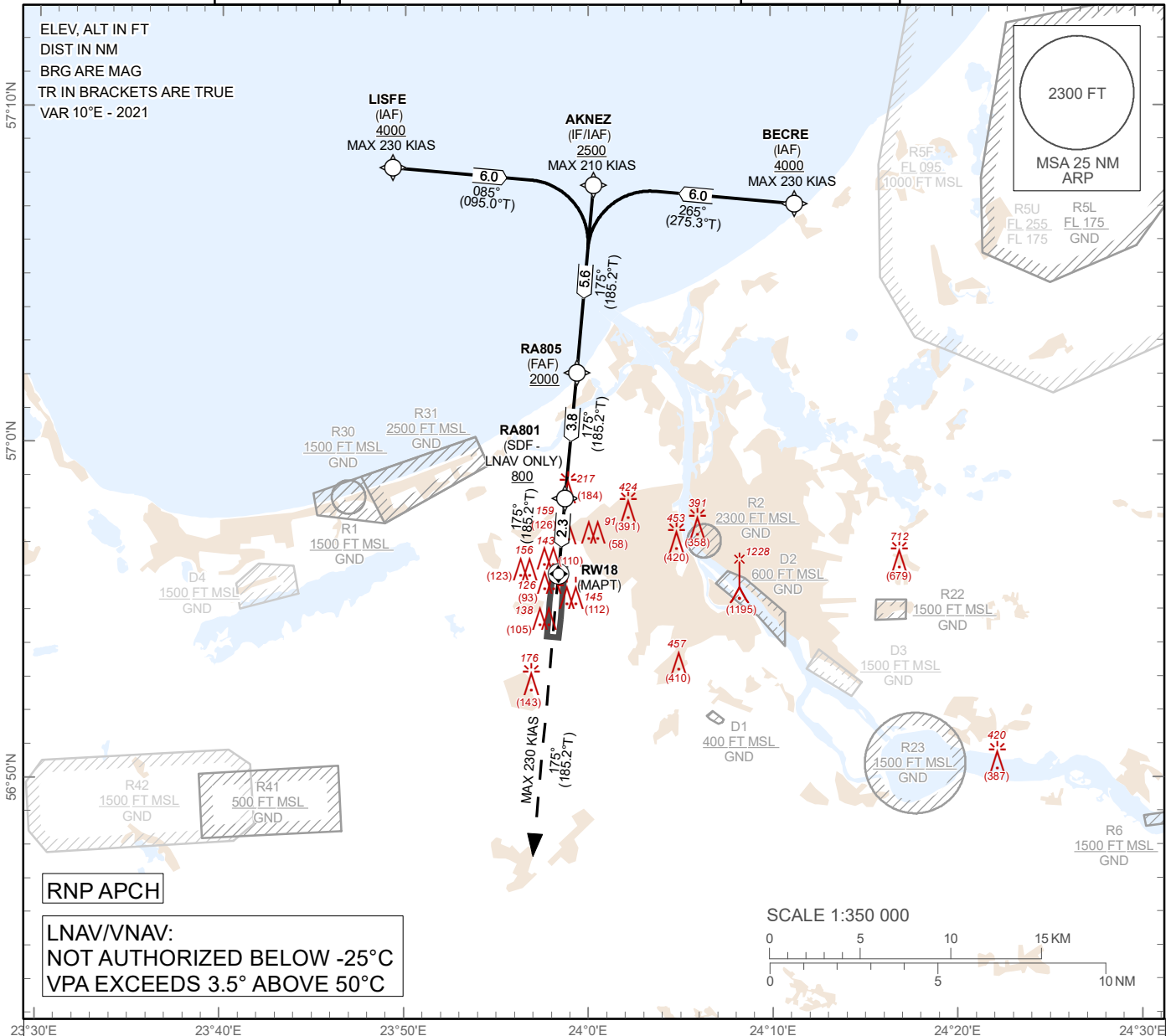
INSTRUMENT APPROACH CHART – ICAO

SBAS CH 95829 E18A

**AERODROME ELEV 37 ft
HEIGHTS RELATED TO
THR RWY 18 - ELEV 33 ft**

APP 129.925
134.850 (HX)
TWR 118.105
ATIS 120.180

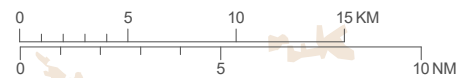
**RIGA (EVRA)
RNP Y RWY18**



RNP APCH

**LNAV/VNAV:
NOT AUTHORIZED BELOW -25°C
VPA EXCEEDS 3.5° ABOVE 50°C**

SCALE 1:350 000



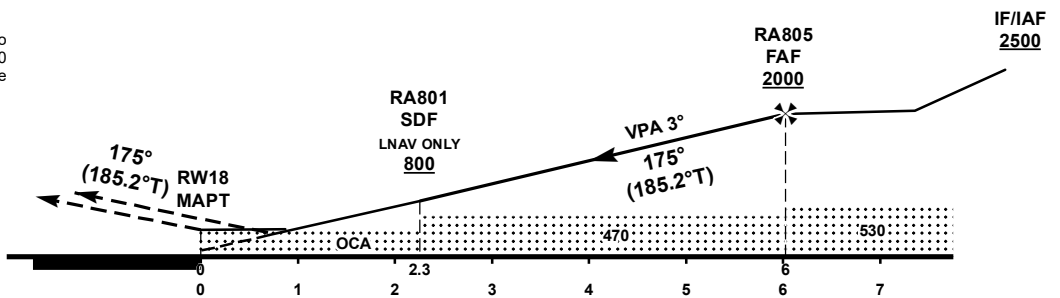
TRANSITION ALT 5000 FT

MISSED APPROACH
Climb on runway track to 2500, after passing 1500 radar vectoring will be provided.

COM FAILURE see EVRA AD 2.22

TCH 52

THR ELEV 33 FT
NM from THR RWY 18



OCA (H)		A	B	C	D
Straight-in Approach	LNAV	410(370)			
	LNAV/VNAV	289(256)	301(269)	311(278)	321(288)
	LPV	273(240)	285(253)	293(261)	303(271)

DIST THR	5	4	3	2	1
ALT	1680	1360	1040	720	410

GS		kt	80	100	120	140	160	180
Rate of descent	ft/min	420	530	640	740	850	960	

For data tabulation see verso

Changes: procedure updated, R41, R42 established.

05 SEP 2024

RIGA (EVRA)	SBAS CH 95829 E18A	AERODROME ELEV 37 ft HEIGHTS RELATED TO THR RWY 18 - ELEV 33 ft	INSTRUMENT APPROACH CHART – ICAO
RNP Y RWY 18			

TABULAR DESCRIPTION

RNP Y RWY 18											
Serial Number	Path Descriptor	Waypoint Identifier	Fly-over	Course °M(°T)	Magnetic Variation	Distance (NM)	Turn Direction	Altitude (FT)	Speed (KT)	VPA (°) / TCH (FT)	Navigation Specification
010	IF	LISFE	-	-	+10.0	-	-	+4000	-230	-	RNAV 1
020	TF	AKNEZ	-	085(095.0)	+10.0	6.0	R	+2500	-	-	RNAV 1
010	IF	BECRE	-	-	+10.0	-	-	+4000	-230	-	RNAV 1
020	TF	AKNEZ	-	265(275.3)	+10.0	6.0	L	+2500	-	-	RNAV 1
010	IF	AKNEZ	-	-	+10.0	-	-	+2500	-210	-	RNAV 1
010	IF	AKNEZ	-	-	+10.0	-	-	+2500	-210	-	RNAV 1
020	TF	RA805	-	175(185.2)	+10.0	5.6	-	+2000	-	-	RNP APCH
030	TF	RA801	-	175(185.2)	+10.0	3.8	-	+800*	-	-	RNP APCH
040	TF	RW18	Y	175(185.2)	+10.0	2.3	-	@85	-	-3.0/52	RNP APCH
050	CA	-	-	175(185.2)	+10.0	-	-	@2500	-230	-	RNP APCH

* LNAV ONLY

WAYPOINT LIST

RNP Y RWY 18		
Waypoint Identifier	Coordinates	
LISFE	57°08'11.43" N	023°49'20.15" E
BECRE	57°07'06.51" N	024°11'15.77" E
AKNEZ	57°07'39.45" N	024°00'18.12" E
RA805	57°02'05.64" N	023°59'22.60" E
RA801	56°58'20.81" N	023°58'45.33" E
RW18	56°56'06.25" N	023°58'23.08" E

FAS DATA BLOCK**INPUT DATA**

Operation Type	0
SBAS Provider	1 (EGNOS)
Airport Identifier	EVRA
Runway	18
Runway Letter	0 (None)
Approach Performance Designator	0
Route Indicator	Y
Reference Path Data Selector	0
Reference Path Identifier	E18A
LTP/FTP Latitude	565606.2470N
LTP/FTP Longitude	0235823.1160E
LTP/FTP Ellipsoidal Height (metres)	30.6
FPAP Latitude	565414.1200N
Delta FPAP Latitude (seconds)	-112.1270
FPAP Longitude	0235804.6185E
Delta FPAP Longitude (seconds)	-18.4975
Threshold Crossing Height	16.0
TCH Units Selector	1 (metres)
Glidepath Angle (degrees)	3.00
Course Width (metres)	104.50
Length Offset (metres)	288
HAL (metres)	40.0
VAL (metres)	35.0

OUTPUT DATA

Data Block	10 01 12 16 05 12 C8 00 01 38 31 05 CE 12 6F 18 18 C3 49 0A 32 15 02 94 FC 7D 6F FF 40 81 2C 01 62 24 C8 AF 15 19 26 A7
Calculated CRC Value	151926A7
Supplied CRC Value	151926A7
Comparison Result	OK

REQUIRED ADDITIONAL DATA

ICAO Code	EV
LTP/FTP Orthometric Height (metres)	9.9

EUROCONTROL FAS DB tool Version 3.2.1