

STANDARD DEPARTURE CHART - INSTRUMENT (SID) - ICAO

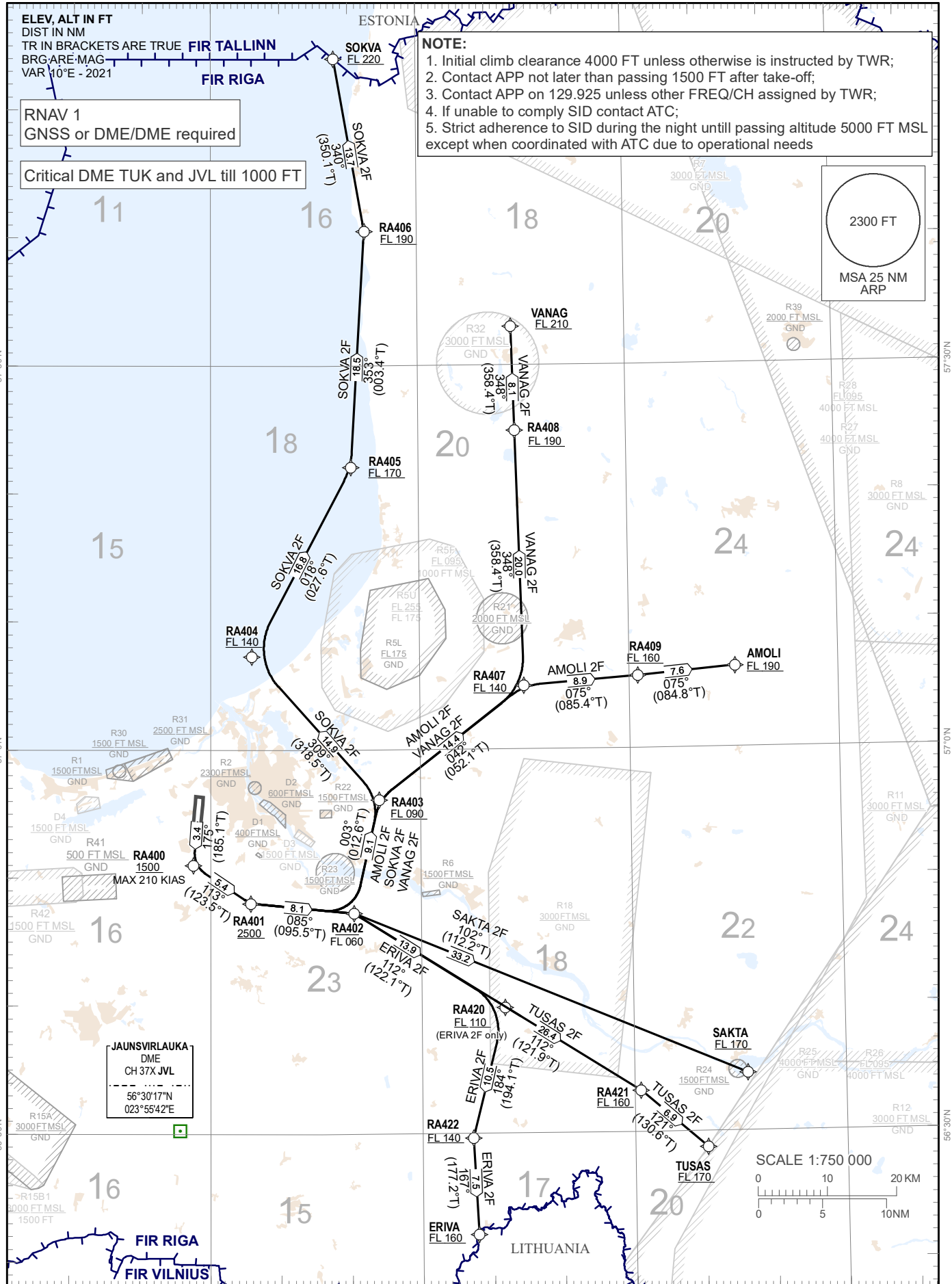
TRANSITION ALTITUDE 5000 FT

APP 129.925  
TWR 134.850 (HX)  
ATIS 118.105  
120.180

RIGA (EVRA)  
RNAV RWY 18  
(direction EAST)

MAX IAS 250 kt BELOW FL 100

AMOLI 2F, ERIVA 2F, SAKTA 2F, SOKVA 2F, TUSAS 2F, VANAG 2F



Changes: R41, R42 established, note updated.

RNAV PROCEDURE CODING TABLES

AMOLI 2F										
Serial Number	Path Descriptor	Waypoint Identifier	Fly - over	Course *M(*T)	Magnetic Variation(°)	Distance NM	Turn Direction	Altitude FT	Speed KT	Navigation Specification
10	CF	RA400	-	175(185.1)	+10.0	3.4	-	+1500	-210	RNAV 1
20	TF	RA401	-	113(123.5)	+10.0	5.4	L	+2500		RNAV 1
30	TF	RA402	-	085(095.5)	+10.0	8.1	L	-060 FL		RNAV 1
40	TF	RA403	-	003(012.6)	+10.0	9.1	L	+090 FL		RNAV 1
50	TF	RA407	-	042(052.1)	+10.0	14.4	R	+140 FL		RNAV 1
60	TF	RA409	-	075(085.4)	+10.0	8.9	R	+160 FL		RNAV 1
70	TF	AMOLI	-	075(084.8)	+10.0	7.6	-	+190 FL		RNAV 1

ERIVA 2F										
Serial Number	Path Descriptor	Waypoint Identifier	Fly - over	Course *M(*T)	Magnetic Variation(°)	Distance NM	Turn Direction	Altitude FT	Speed KT	Navigation Specification
10	CF	RA400	-	175(185.1)	+10.0	3.4	-	+1500	-210	RNAV 1
20	TF	RA401	-	113(123.5)	+10.0	5.4	L	+2500		RNAV 1
30	TF	RA402	-	085(095.5)	+10.0	8.1	L	-060 FL		RNAV 1
40	TF	RA420	-	112(122.1)	+10.0	13.9	R	+110 FL		RNAV 1
50	TF	RA422	-	184(194.1)	+10.0	10.5	R	+140 FL		RNAV 1
60	TF	ERIVA	-	167(177.2)	+10.0	7.5	L	+160 FL		RNAV 1

SAKTA 2F										
Serial Number	Path Descriptor	Waypoint Identifier	Fly - over	Course *M(*T)	Magnetic Variation(°)	Distance NM	Turn Direction	Altitude FT	Speed KT	Navigation Specification
10	CF	RA400	-	175(185.1)	+10.0	3.4	-	+1500	-210	RNAV 1
20	TF	RA401	-	113(123.5)	+10.0	5.4	L	+2500		RNAV 1
30	TF	RA402	-	085(095.5)	+10.0	8.1	L	-060 FL		RNAV 1
40	TF	SAKTA	-	102(112.2)	+10.0	33.2	R	+170 FL		RNAV 1

SOKVA 2F										
Serial Number	Path Descriptor	Waypoint Identifier	Fly - over	Course *M(*T)	Magnetic Variation(°)	Distance NM	Turn Direction	Altitude FT	Speed KT	Navigation Specification
10	CF	RA400	-	175(185.1)	+10.0	3.4	-	+1500	-210	RNAV 1
20	TF	RA401	-	113(123.5)	+10.0	5.4	L	+2500		RNAV 1
30	TF	RA402	-	085(095.5)	+10.0	8.1	L	-060 FL		RNAV 1
40	TF	RA403	-	003(012.6)	+10.0	9.1	L	+090 FL		RNAV 1
50	TF	RA404	-	309(318.5)	+10.0	14.9	L	+140 FL		RNAV 1
60	TF	RA405	-	018(027.6)	+10.0	16.8	R	+170 FL		RNAV 1
70	TF	RA406	-	353(003.4)	+10.0	18.5	L	+190 FL		RNAV 1
80	TF	SOKVA	-	340(350.1)	+10.0	13.7	L	+220 FL		RNAV 1

TUSAS 2F										
Serial Number	Path Descriptor	Waypoint Identifier	Fly - over	Course *M(*T)	Magnetic Variation(°)	Distance NM	Turn Direction	Altitude FT	Speed KT	Navigation Specification
10	CF	RA400	-	175(185.1)	+10.0	3.4	-	+1500	-210	RNAV 1
20	TF	RA401	-	113(123.5)	+10.0	5.4	L	+2500		RNAV 1
30	TF	RA402	-	085(095.5)	+10.0	8.1	L	-060 FL		RNAV 1
40	TF	RA421	-	112(121.9)	+10.0	26.4	R	+160 FL		RNAV 1
50	TF	TUSAS	-	121(130.6)	+10.0	6.9	R	+170 FL		RNAV 1

VANAG 2F										
Serial Number	Path Descriptor	Waypoint Identifier	Fly - over	Course *M(*T)	Magnetic Variation(°)	Distance NM	Turn Direction	Altitude FT	Speed KT	Navigation Specification
10	CF	RA400	-	175(185.1)	+10.0	3.4	-	+1500	-210	RNAV 1
20	TF	RA401	-	113(123.5)	+10.0	5.4	L	+2500		RNAV 1
30	TF	RA402	-	085(095.5)	+10.0	8.1	L	-060 FL		RNAV 1
40	TF	RA403	-	003(012.6)	+10.0	9.1	L	+090 FL		RNAV 1
50	TF	RA407	-	042(052.1)	+10.0	14.4	R	+140 FL		RNAV 1
60	TF	RA408	-	348(358.4)	+10.0	20.0	L	+190 FL		RNAV 1
70	TF	VANAG	-	348(358.4)	+10.0	8.1	-	+210 FL		RNAV 1

WAYPOINT COORDINATES

WPT	COORD	
AMOLI	570621.00N	0251515.00E
ERIVA	562208.00N	0243749.00E
SAKTA	563432.00N	0251602.00E
SOKVA	575400.00N	0241758.00E
TUSAS	562846.00N	0251018.00E
VANAG	573301.00N	0244333.00E
RA400	565100.48N	0235732.73E
RA401	564802.00N	0240544.40E
RA402	564714.64N	0242026.60E
RA403	565608.63N	0242405.40E

WPT	COORD	
RA404	570717.15N	0240557.30E
RA405	572205.47N	0242018.20E
RA406	574031.02N	0242221.90E
RA407	570458.20N	0244457.40E
RA408	572455.13N	0244357.50E
RA409	570540.30N	0250118.00E
RA420	563950.73N	0244146.90E
RA421	563313.42N	0250054.00E
RA422	562938.65N	0243709.40E