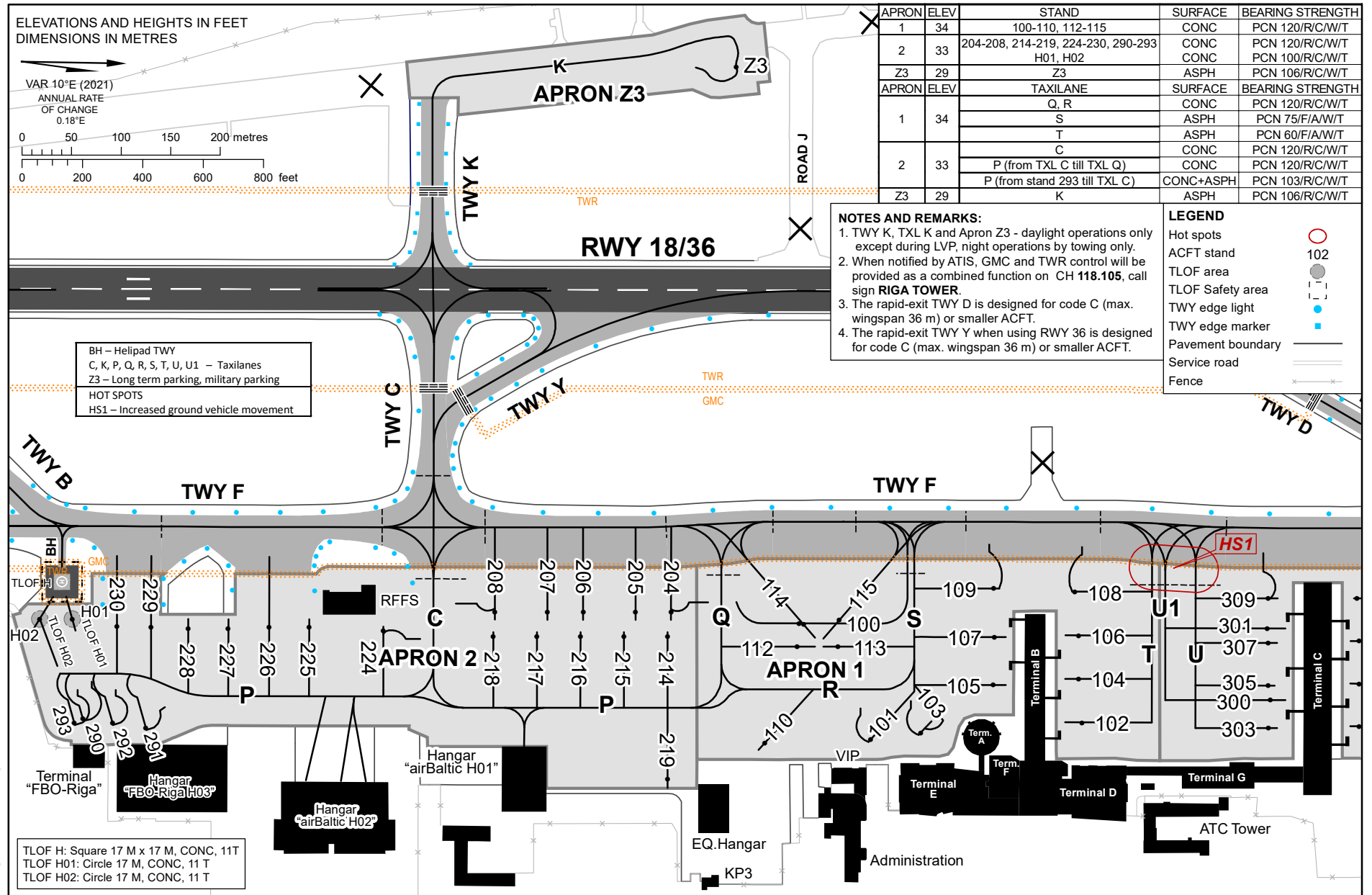


**AIRCRAFT PARKING/
DOCKING CHART – ICAO**

APRONS ELEV 33 FT

TWR	118.105	APRON	131.605
GMC	118.805	ATIS	120.180

**RIGA
APRON 1, 2, Z3**



Changes: stand 224, guidance lines updated, stands 220, 221 withdrawn.

RIGA

STAND CHARACTERISTICS

APRON	STAND	STANDARD TAXI ROUTE				COORDINATES		PUSHBACK REQUIRED	MAX WINGSPAN (M)	MAX LENGTH (M)
		ARR 18	DEP 18	ARR 36	DEP 36	LATITUDE	LONGITUDE			
1	100	B-F	Q-F-G	E-F	Q-F-A	56 55 13.10 N	023 58 34.28 E	N	64.99	75.50
1	101	Y-C-F-S	R-Q-F-G	D-F-S	R-Q-F-A	56 55 15.09 N	023 58 41.56 E	N	29.00	32.99
1	102	Y-C-F-T	T-F-G	D-F-T	T-F-A	56 55 22.02 N	023 58 41.66 E	Y	35.99	44.51
1	103	Y-C-F-S	S-F-G	D-F-S	S-F-A	56 55 16.74 N	023 58 41.43 E	N	29.99	32.99
1	104	Y-C-F-T	T-F-G	D-F-T	T-F-A	56 55 22.04 N	023 58 39.05 E	Y	35.99	44.51
1	105	Y-C-F-S	S-F-G	D-F-S	S-F-A	56 55 19.24 N	023 58 38.97 E	Y	35.99	44.51
1	106	Y-C-F-T	T-F-G	D-F-T	T-F-A	56 55 22.16 N	023 58 36.47 E	Y	35.99	44.51
1	107	B-F-S	S-F-G	E-F-S	S-F-A	56 55 19.42 N	023 58 36.12 E	Y	51.99	61.50
1	108	Y-C-F-T	F-G	D-F-T	F-A	56 55 22.16 N	023 58 33.84 E	N	35.99	44.51
1	109	Y-C-F-S	F-G	D-F-S	F-A	56 55 19.54 N	023 58 33.24 E	N	35.99	44.51
1	110	Y-C-F-S-R	R-Q-F-G	D-F-S-R	R-Q-F-A	56 55 11.64 N	023 58 41.20 E	Y	35.99	39.50
1	112	Y-C-F-Q	Q-F-G	D-F-Q	Q-F-A	56 55 12.97 N	023 58 35.66 E	Y	35.99	44.51
1	113	Y-C-F-S	S-F-G, R-Q-F-G	D-F-S	S-F-A, R-Q-F-A	56 55 14.31 N	023 58 35.87 E	Y	35.99	44.51
1	114	B-F	F-G	E-F	F-A	56 55 13.24 N	023 58 34.37 E	Y	51.99	61.50
1	115	B-F	F-G	E-F	F-A	56 55 14.42 N	023 58 34.31 E	Y	42.00	48.00
2	204	Y-C-F	Q-F-G	D-F	Q-F-A	56 55 08.97 N	023 58 32.94 E	Y/N	27.05	36.24
2	205	Y-C-F	F-G	D-F	F-A	56 55 07.81 N	023 58 32.74 E	Y	35.92	39.48
2	206	Y-C-F	F-G	D-F	F-A	56 55 06.11 N	023 58 32.46 E	Y	27.05	36.24
2	207	Y-C-F	F-G	D-F	F-A	56 55 04.94 N	023 58 32.27 E	Y	35.92	39.48
2	208	Y-C-F	C-F-G	D-F	C-F-A	56 55 03.23 N	023 58 31.99 E	Y/N	35.92	39.48
2	214	Y-C-P	P-Q-F-G	D-F-Q-P	P-Q-F-A	56 55 08.78 N	023 58 34.37 E	Y	35.99	44.51
2	215	Y-C-P	P-Q-F-G	D-F-Q-P	P-Q-F-A	56 55 07.36 N	023 58 34.14 E	Y	35.99	44.51
2	216	Y-C-P	P-C-F-G	D-F-C-P	P-C-F-A	56 55 05.95 N	023 58 33.91 E	Y	35.99	44.51
2	217	Y-C-P	P-C-F-G	D-F-C-P	P-C-F-A	56 55 04.53 N	023 58 33.67 E	Y	35.99	44.51
2	218	Y-C-P	P-C-F-G	D-F-C-P	P-C-F-A	56 55 03.11 N	023 58 33.44 E	Y	35.99	44.51
2	219	Y-C-P	P-Q-F-G	D-F-Q-P	P-Q-F-A	56 55 08.37 N	023 58 42.87 E	Y	35.99	44.51
2	224	Y-C-P	C-F-G	D-F-C-P	C-F-A	56 54 59.55 N	023 58 32.53 E	Y/N	35.92	39.48
2	225	Y-C-P	P-C-F-G	D-F-C-P	P-C-F-A	56 54 57.15 N	023 58 31.93 E	Y	35.99	44.51
2	226	Y-C-P	F-G	D-F-C-P	F-A	56 54 55.84 N	023 58 31.71 E	N	35.99	44.51
2	227	Y-C-P	P-C-F-G	D-F-C-P	P-C-F-A	56 54 54.51 N	023 58 31.58 E	Y	35.99	44.51
2	228	Y-C-P	P-C-F-G	D-F-C-P	P-C-F-A	56 54 53.21 N	023 58 31.37 E	Y	35.99	44.51
2	229	Y-C-P	F-G	E-F-C-P	F-A	56 54 52.00 N	023 58 31.09 E	N	28.91	31.10
2	230	Y-C-P	F-G	E-F-C-P	F-A	56 54 50.89 N	023 58 30.89 E	N	28.50	29.94
2	290	Y-C-P	P-C-F-G	E-F-C-P	P-C-F-A	56 54 49.52 N	023 58 36.20 E	Y/N	35.99	44.60
2	291	Y-C-P	P-C-F-G	E-F-C-P	P-C-F-A	56 54 51.54 N	023 58 37.06 E	Y/N	23.80	28.50
2	292	Y-C-P	P-C-F-G	E-F-C-P	P-C-F-A	56 54 50.47 N	023 58 36.60 E	Y/N	30.40	30.50
2	293	Y-C-P	P-C-F-G	E-F-C-P	P-C-F-A	56 54 49.23 N	023 58 36.39 E	Y/N	30.40	30.50
3	300	B-F-U1	U1-F-G	E-F-U1	U1-F-A	56 55 28.21 N	023 58 41.33 E	Y	64.99	75.99
3	301	B-F-U1	U1-F-G	E-F-U1	U1-F-A	56 55 28.32 N	023 58 37.04 E	Y	64.99	70.99
3	302	Y-C-F-V	V-F-G	D-F-V	V-F-A	56 55 31.03 N	023 58 43.35 E	Y	35.99	39.50
3	303	Y-C-F-U	U-F-G	D-F-U	U-F-A	56 55 28.07 N	023 58 42.98 E	Y	35.99	44.51
3	304	Y-C-F-V	V-F-G	D-F-V	V-F-A	56 55 31.15 N	023 58 40.82 E	Y	35.99	44.51
3	305	Y-C-F-U	U-F-G	D-F-U	U-F-A	56 55 28.19 N	023 58 40.45 E	Y	35.99	44.51
3	306	Y-C-F-V	V-F-G	D-F-V	V-F-A	56 55 31.28 N	023 58 38.28 E	Y	35.99	44.51
3	307	Y-C-F-U	U-F-G	D-F-U	U-F-A	56 55 28.31 N	023 58 37.92 E	Y	35.99	45.06
3	308	Y-C-F-V	V-F-G	D-F-V	V-F-A	56 55 31.33 N	023 58 35.73 E	Y	35.99	44.51
3	309	Y-C-F-U	F-G	D-F-U	F-A	56 55 28.44 N	023 58 35.27 E	N	35.99	44.51
3	311	Y-C-F-V-W	F-G	D-V-W	F-A	56 55 35.63 N	023 58 35.67 E	N	35.99	38.71
3	312	Y-C-F-V-W	F-G	D-V-W	F-A	56 55 37.13 N	023 58 35.91 E	N	35.99	38.71
3	313	Y-C-F-V-W	F-G	D-V-W	F-A	56 55 38.51 N	023 58 36.14 E	N	35.99	38.71
3	314	Y-C-F-V-W	F-G	D-V-W	F-A	56 55 39.90 N	023 58 36.37 E	N	35.99	38.71
3	315	Y-C-F-V-W	F-G	D-V-W	F-A	56 55 41.39 N	023 58 36.61 E	N	35.99	38.71
3	316	Y-C-F-V-W	F-G	D-V-W	F-A	56 55 42.78 N	023 58 36.84 E	N	35.99	38.71
3	317	Y-C-F-V-W	F-G	D-V-W	F-A	56 55 44.16 N	023 58 37.06 E	N	31.99	35.53
3	321	Y-C-F-V-W	W-E-F-G	D-V-W	W-E-F-A	56 55 35.23 N	023 58 43.88 E	Y	35.99	45.06
3	322	Y-C-F-V-W	W-E-F-G	D-V-W	W-E-F-A	56 55 36.64 N	023 58 44.11 E	Y	35.99	45.06
3	323	Y-C-F-V-W	W-E-F-G	D-V-W	W-E-F-A	56 55 38.06 N	023 58 44.34 E	Y	35.99	45.06
3	324	Y-C-F-V-W	W-E-F-G	D-V-W	W-E-F-A	56 55 39.48 N	023 58 44.57 E	Y	35.99	45.06
3	325	Y-C-F-V-W	W-E-F-G	D-V-W	W-E-F-A	56 55 40.90 N	023 58 44.81 E	Y	35.99	45.06
3	326	Y-C-F-V-W	W-E-F-G	D-V-W	W-E-F-A	56 55 42.33 N	023 58 44.78 E	Y	35.99	44.51
3	327	Y-C-F-V-W	W-E-F-G	D-V-W	W-E-F-A	56 55 43.74 N	023 58 45.03 E	Y	33.99	40.74
4	401	B-F-E-E1	E1-E-F-G	E-E1	E1-E-F-A	56 55 44.27 N	023 59 01.24 E	Y	42.00	55.00
4	402	B-F-E-E1	E1-E-F-G	E-E1	E1-E-F-A	56 55 47.26 N	023 59 01.74 E	Y	42.00	55.00
4	461	Y-C-F-E-E1	E1-E-F-G	E-E1	E1-E-F-A	56 55 42.91 N	023 58 52.85 E	Y	23.99	30.30
4	462	Y-C-F-E-E1	E1-E-F-G	E-E1	E1-E-F-A	56 55 43.05 N	023 58 51.04 E	Y	28.65	30.30
4	467	Y-C-F-E-E1	E1-E-F-G	E-E1	E1-E-F-A	56 55 44.56 N	023 59 01.34 E	Y	35.99	45.06
4	468	Y-C-F-E-E1	E1-E-F-G	E-E1	E1-E-F-A	56 55 45.91 N	023 59 01.56 E	Y	35.99	45.06
4	469	Y-C-F-E-E1	E1-E-F-G	E-E1	E1-E-F-A	56 55 47.34 N	023 59 01.78 E	Y	35.99	45.06
4	470	Y-C-F-E-E1	E1-E-F-G	E-E1	E1-E-F-A	56 55 48.69 N	023 59 02.00 E	Y	35.99	45.06
4	471	Y-C-F-E-E1	E1-E-F-G	E-E1	E1-E-F-A	56 55 51.24 N	023 58 58.02 E	Y/N	20.00	20.91
4	472	Y-C-F-E-E1	E1-E-F-G	E-E1	E1-E-F-A	56 55 52.17 N	023 58 58.17 E	Y/N	23.93	20.91
4	473	Y-C-F-E-E1	E1-E-F-G	E-E1	E1-E-F-A	56 55 53.11 N	023 58 58.33 E	Y/N	22.00	20.91
4	474	Y-C-F-E-E1	E1-E-F-G	E-E1	E1-E-F-A	56 55 54.03 N	023 58 58.49 E	Y/N	22.00	20.91
4	475	Y-C-F-E-E1	E1-E-F-G	E-E1	E1-E-F-A	56 55 50.07 N	023 59 02.82 E	Y/N	22.00	29.87
4	476	Y-C-F-E-E1	E1-E-F-G	E-E1	E1-E-F-A	56 55 51.00 N	023 59 02.97 E	Y/N	23.93	32.51
4	477	Y-C-F-E-E1	E1-E-F-G	E-E1	E1-E-F-A	56 55 51.94 N	023 59 03.13 E	Y/N	22.75	29.87
4	478	Y-C-F-E-E1	E1-E-F-G	E-E1	E1-E-F-A	56 55 52.87 N	023 59 03.28 E	Y/N	23.25	32.51
4	479	Y-C-F-E-E1	E1-E-F-G	E-E1	E1-E-F-A	56 55 53.79 N	023 59 03.44 E	Y/N	22.00	29.87
5	501	B-F-E	E-F-G	E	E-F-A	56 55 49.62 N	023 58 40.19 E	Y	73.30	76.26
5	502	B-F-E	E-F-G	E	E-F-A	56 55 49.23 N	023 58 45.02 E	Y	68.40	76.26
5	503	B-F-E	E-F-G	E	E-F-A	56 55 49.00 N	023 58 49.64 E	Y	68.40	76.26
5	511	Y-C-F-E	E-F-G	D-F-E	E-F-A	56 55 49.44 N	023 58 38.88 E	Y	35.99	44.51
5	512	Y-C-F-E	E-F-G	D-F-E	E-F-A	56 55 49.32 N	023 58 41.42 E	Y	35.99	44.51
23	23	K	K-C-F-G	E-F-C-K	K-C-F-A	56 55 12.66 N	023 58 00.87 E	N	42.36	45.09

For helicopter stands see EVRA AD 2.24.2.4