

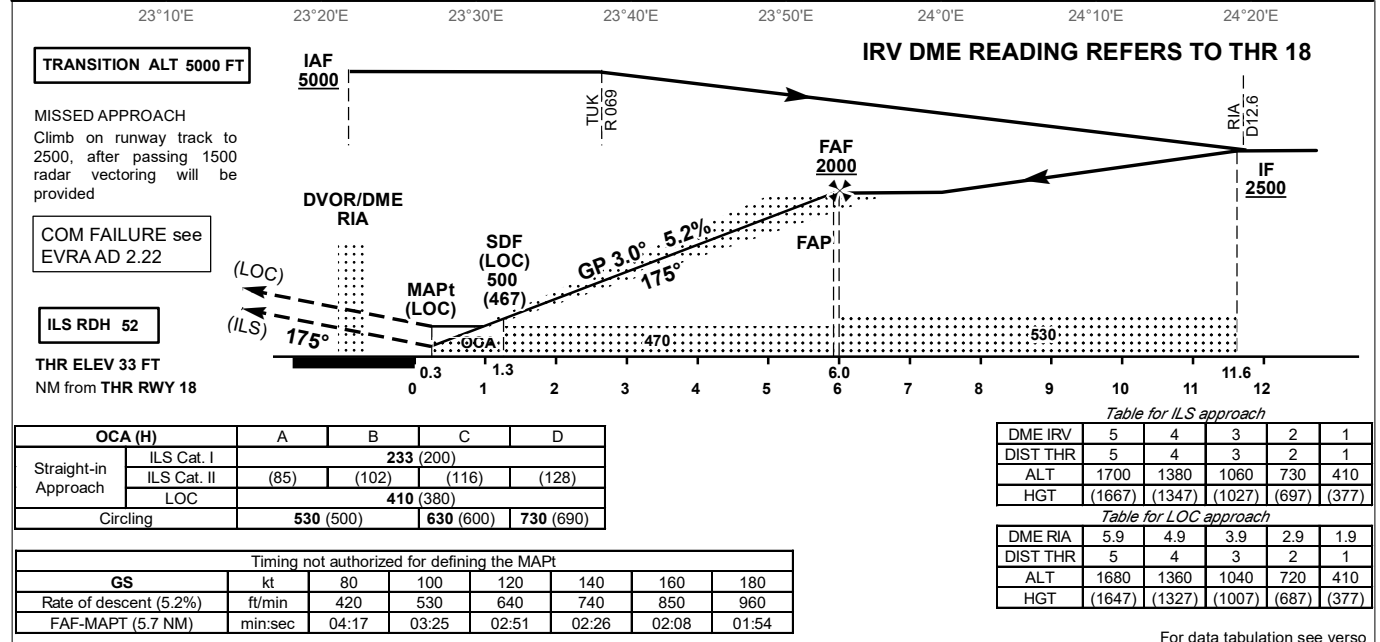
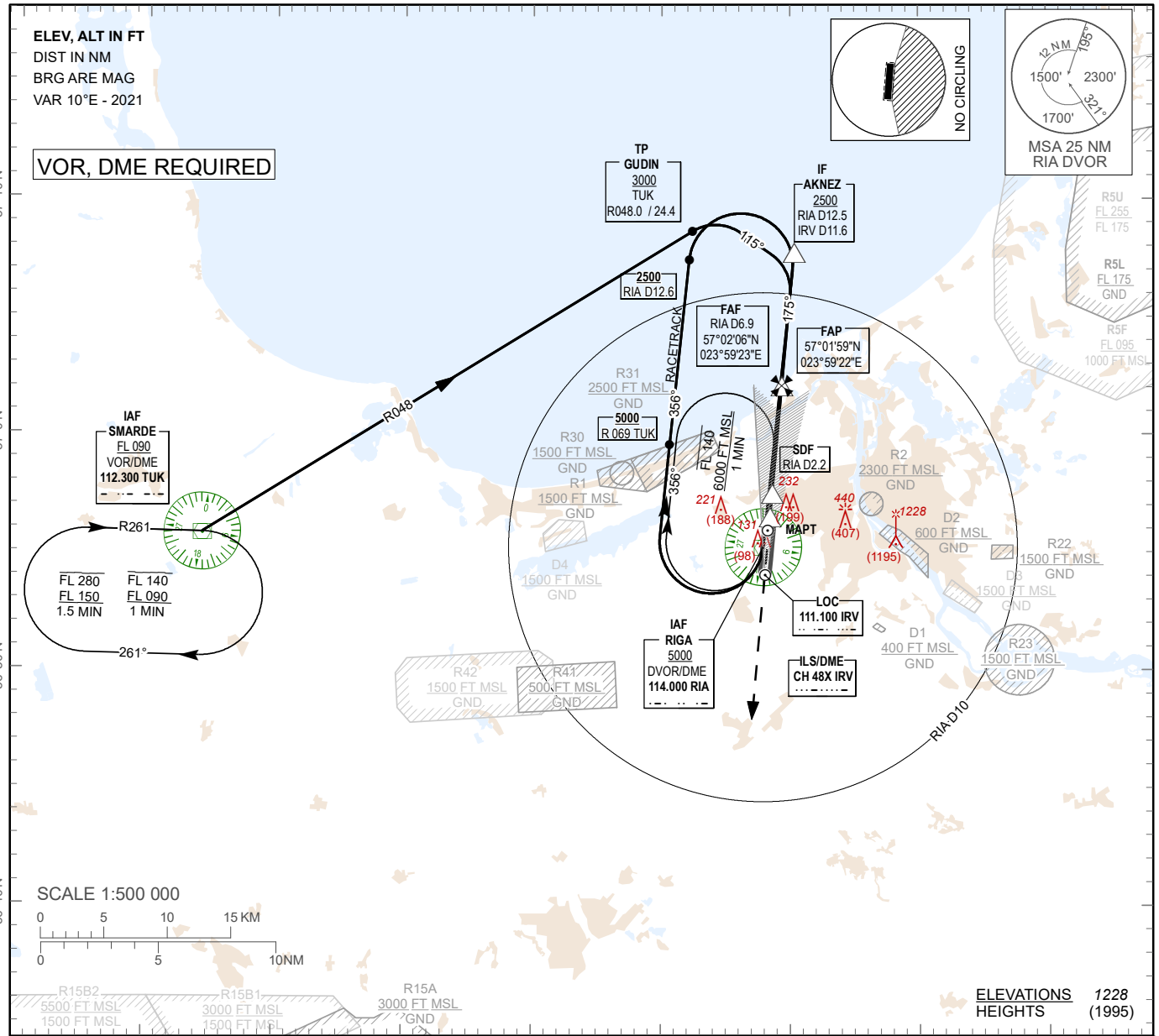
**INSTRUMENT
APPROACH
CHART - ICAO**

**AERODROME ELEV 37ft
HEIGHTS RELATED TO
THR RWY 18 - ELEV 33 ft**

APP 129.925
134.850 (HX)
TWR 118.105
ATIS 120.180

RIGA (EVRA)

ILS Z or LOC Z RWY 18



OCA (H)		A	B	C	D
Straight-in Approach	ILS Cat. I	233 (200)			
	ILS Cat. II	(85)	(102)	(116)	(128)
	LOC	410 (380)			
Circling		530 (500)	630 (600)	730 (690)	

Timing not authorized for defining the MAPt							
GS	ft	80	100	120	140	160	180
Rate of descent (5.2%)	ft/min	420	530	640	740	850	960
FAF-MAPt (5.7 NM)	min:sec	04:17	03:25	02:51	02:26	02:08	01:54

Table for ILS approach

	5	4	3	2	1
DME IRV	5	4	3	2	1
DIST THR	5	4	3	2	1
ALT	1700	1380	1060	730	410
HGT	(1667)	(1347)	(1027)	(697)	(377)

Table for LOC approach

	5.9	4.9	3.9	2.9	1.9
DME RIA	5.9	4.9	3.9	2.9	1.9
DIST THR	5	4	3	2	1
ALT	1680	1360	1040	720	410
HGT	(1647)	(1327)	(1007)	(687)	(377)

For data tabulation see verso

Changes: R41, R42 established, editorial.

RIGA (EVRA)

ILS Z or LOC Z RWY 18

AERONAUTICAL DATA TABULATION

ILS Z or LOC Z approach to RWY18 from RIA DVOR/DME (IAF), TUK VOR/DME (IAF)	
Fix/point	Coordinates
RIA DVOR/DME (IAF)	56°55'15.1"N 023°57'54.7"E
TUK VOR/DME (IAF)	56°55'50.1"N 023°14'23.9"E
GUDIN (TP) R048.00° D24.40 TUK	57°08'38.9"N 023°52'24.0"E
AKNEZ (IF) IRV D11.63; RIA D12.50	57°07'39.5"N 024°00'18.1"E
FAP (ILS)	57°01'59.2"N 023°59'21.5"E
FAF RIA D6.91 (LOC)	57°02'05.6"N 023°59'22.6"E
SDF RIA D2.20 (LOC)	56°57'24.6"N 023°58'36.1"E
MAPT RIA D1.19 (LOC)	56°56'24.1"N 023°58'26.1"E
THR RWY 18	56°56'06.25"N 023°58'23.08"E
IRV LOC	56°54'04.3"N 023°58'03.0"E
Final approach descent angle is 3.00°	