

STANDARD DEPARTURE CHART - INSTRUMENT (SID) - ICAO

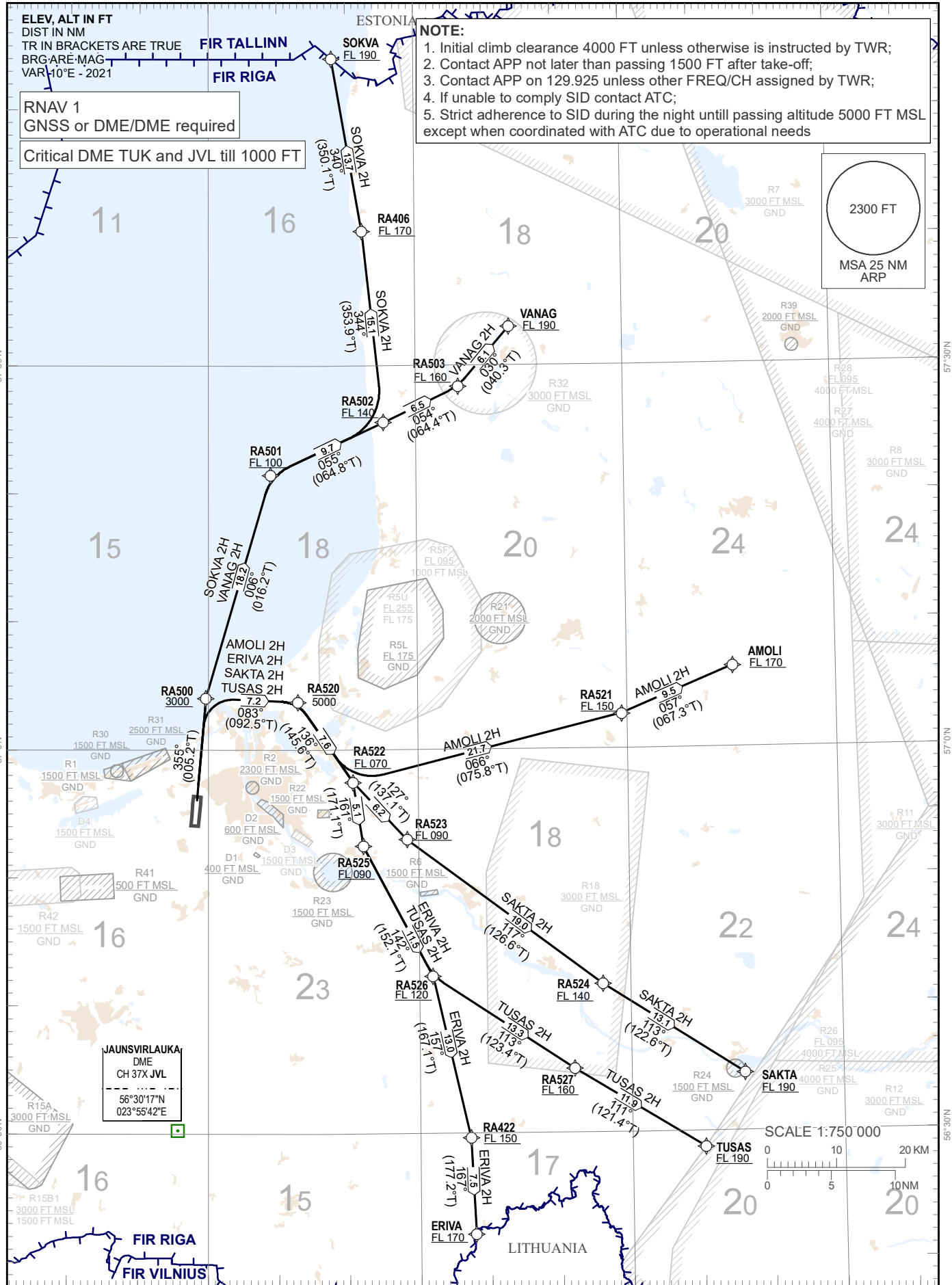
TRANSITION ALTITUDE 5000 FT

APP 129.925
134.850 (HX)
TWR 118.105
ATIS 120.180

RIGA (EVRA)
RNAV RWY 36
(direction EAST)

MAX IAS 250 kt BELOW FL 100

AMOLI 2H, ERIVA 2H, SAKTA 2H, SOKVA 2H, TUSAS 2H, VANAG 2H



Changes: R41, R42 established, note updated.

RNAV PROCEDURE CODING TABLES

AMOLI 2H										
Serial Number	Path Descriptor	Waypoint Identifier	Fly - over	Course °M(°T)	Magnetic Variation(°)	Distance NM	Turn Direction	Altitude FT	Speed KT	Navigation Specification
10	CA	-	-	355(005.2)	+10.0		-	+600		RNAV 1
20	DF	RA500	-	-	+10.0		-	+3000		RNAV 1
30	TF	RA520	-	083(092.5)	+10.0	7.2	R	-5000		RNAV 1
40	TF	RA522	-	136(145.6)	+10.0	7.6	R	+070 FL		RNAV 1
50	TF	RA521	-	066(075.8)	+10.0	21.7	L	+150 FL		RNAV 1
60	TF	AMOLI	-	057(067.3)	+10.0	9.5	L	+170 FL		RNAV 1

ERIVA 2H										
Serial Number	Path Descriptor	Waypoint Identifier	Fly - over	Course °M(°T)	Magnetic Variation(°)	Distance NM	Turn Direction	Altitude FT	Speed KT	Navigation Specification
10	CA	-	-	355(005.2)	+10.0		-	+600		RNAV 1
20	DF	RA500	-	-	+10.0		-	+3000		RNAV 1
30	TF	RA520	-	083(092.5)	+10.0	7.2	R	-5000		RNAV 1
40	TF	RA522	-	136(145.6)	+10.0	7.6	R	+070 FL		RNAV 1
50	TF	RA525	-	161(171.1)	+10.0	5.1	R	+090 FL		RNAV 1
60	TF	RA526	-	142(152.1)	+10.0	11.5	L	+120 FL		RNAV 1
70	TF	RA422	-	157(167.1)	+10.0	13.0	R	+150 FL		RNAV 1
80	TF	ERIVA	-	167(177.2)	+10.0	7.5	R	+170 FL		RNAV 1

SAKTA 2H										
Serial Number	Path Descriptor	Waypoint Identifier	Fly - over	Course °M(°T)	Magnetic Variation(°)	Distance NM	Turn Direction	Altitude FT	Speed KT	Navigation Specification
10	CA	-	-	355(005.2)	+10.0		-	+600		RNAV 1
20	DF	RA500	-	-	+10.0		-	+3000		RNAV 1
30	TF	RA520	-	083(092.5)	+10.0	7.2	R	-5000		RNAV 1
40	TF	RA522	-	136(145.6)	+10.0	7.6	R	+070 FL		RNAV 1
50	TF	RA523	-	127(137.1)	+10.0	6.2	L	+090 FL		RNAV 1
60	TF	RA524	-	117(126.6)	+10.0	19.0	L	+140 FL		RNAV 1
70	TF	SAKTA	-	113(122.6)	+10.0	13.1	-	+190 FL		RNAV 1

SOKVA 2H										
Serial Number	Path Descriptor	Waypoint Identifier	Fly - over	Course °M(°T)	Magnetic Variation(°)	Distance NM	Turn Direction	Altitude FT	Speed KT	Navigation Specification
10	CA	-	-	355(005.2)	+10.0		-	+600		RNAV 1
20	DF	RA500	-	-	+10.0		-	+3000		RNAV 1
30	TF	RA501	-	006(016.2)	+10.0	18.2	R	+100 FL		RNAV 1
40	TF	RA502	-	055(064.8)	+10.0	9.7	R	+140 FL		RNAV 1
50	TF	RA406	-	344(353.9)	+10.0	15.1	L	+170 FL		RNAV 1
60	TF	SOKVA	-	340(350.1)	+10.0	13.7	-	+190 FL		RNAV 1

TUSAS 2H										
Serial Number	Path Descriptor	Waypoint Identifier	Fly - over	Course °M(°T)	Magnetic Variation(°)	Distance NM	Turn Direction	Altitude FT	Speed KT	Navigation Specification
10	CA	-	-	355(005.2)	+10.0		-	+600		RNAV 1
20	DF	RA500	-	-	+10.0		-	+3000		RNAV 1
30	TF	RA520	-	083(092.5)	+10.0	7.2	R	-5000		RNAV 1
40	TF	RA522	-	136(145.6)	+10.0	7.6	R	+070 FL		RNAV 1
50	TF	RA525	-	161(171.1)	+10.0	5.1	R	+090 FL		RNAV 1
60	TF	RA526	-	142(152.1)	+10.0	11.5	L	+120 FL		RNAV 1
70	TF	RA527	-	113(123.4)	+10.0	13.3	L	+160 FL		RNAV 1
80	TF	TUSAS	-	111(121.4)	+10.0	11.9	-	+190 FL		RNAV 1

VANAG 2H										
Serial Number	Path Descriptor	Waypoint Identifier	Fly - over	Course °M(°T)	Magnetic Variation(°)	Distance NM	Turn Direction	Altitude FT	Speed KT	Navigation Specification
10	CA	-	-	355(005.2)	+10.0		-	+600		RNAV 1
20	DF	RA500	-	-	+10.0		-	+3000		RNAV 1
30	TF	RA501	-	006(016.2)	+10.0	18.2	R	+100 FL		RNAV 1
40	TF	RA502	-	055(064.8)	+10.0	9.7	R	+140 FL		RNAV 1
50	TF	RA503	-	054(064.4)	+10.0	6.5	-	+160 FL		RNAV 1
60	TF	VANAG	-	030(040.3)	+10.0	6.1	L	+190 FL		RNAV 1

WAYPOINT COORDINATES

AMOLI	570621.00N	0251515.00E
ERIVA	562208.00N	0243749.00E
SAKTA	563432.00N	0251602.00E
SOKVA	575400.00N	0241758.00E
TUSAS	562846.00N	0251018.00E
VANAG	573301.00N	0244333.00E
RA406	574031.02N	0242221.90E
RA422	562938.65N	0243709.40E
RA500	570403.31N	0235941.16E
RA501	572127.77N	0240902.90E

RA502	572534.38N	0242520.80E
RA503	572822.06N	0243612.80E
RA520	570343.62N	0241251.90E
RA521	570242.57N	0245911.90E
RA522	565729.31N	0242041.50E
RA523	565257.30N	0242822.30E
RA524	564136.90N	0245601.50E
RA525	565229.25N	0242207.40E
RA526	564218.41N	0243154.20E
RA527	563459.89N	0245155.80E