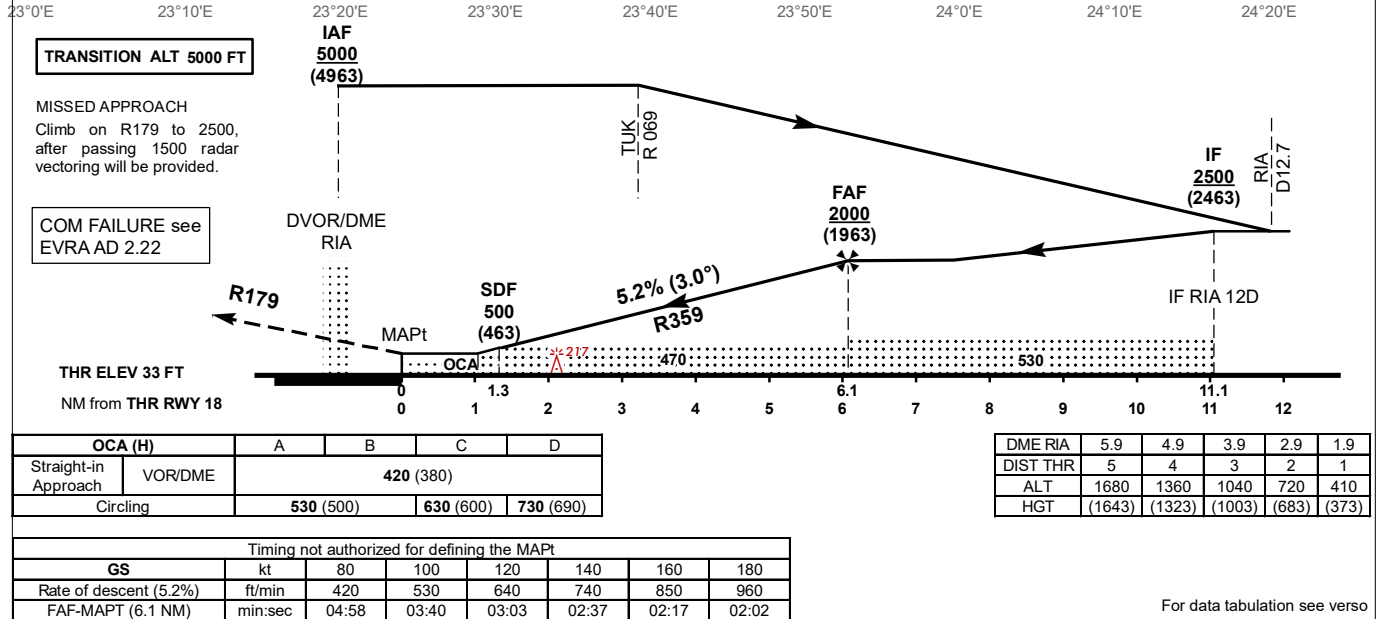
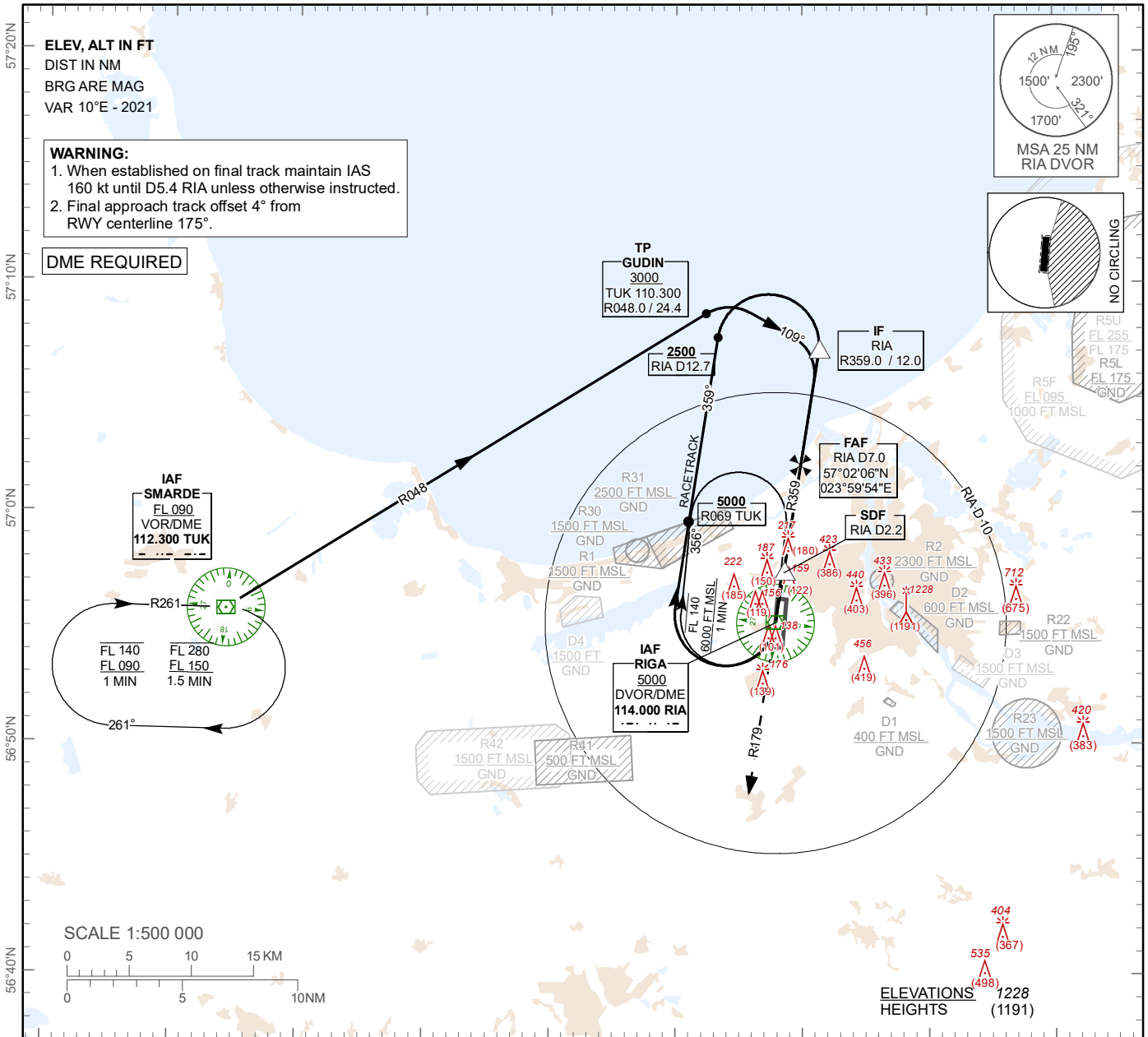


**INSTRUMENT
APPROACH
CHART – ICAO**

**AERODROME ELEV 37ft
HEIGHTS RELATED TO
AD - ELEV 37 ft**

APP 129.925
134.850 (HX)
TWR 118.105
ATIS 120.180

**RIGA (EVRA)
VOR RWY 18**



Changes: procedure updated, R41, R42 established.

RIGA (EVRA)

AERONAUTICAL DATA TABULATION

INSTRUMENT
APPROACH
CHART - ICAO

VOR RWY 18

VOR approach to RWY18 from RIA DVOR/DME (IAF), TUK VOR/DME (IAF)	
Fix/point	Coordinates
RIA DVOR/DME (IAF)	56°55'15.1"N 023°57'54.7"E
TUK VOR/DME (IAF)	56°55'50.1"N 023°14'23.9"E
GUDIN (TP) R048.00° D24.41 TUK	57°08'38.9"N 023°52'24.0"E
(IF) RIA D11.96 RIA R359.00°	57°07'02.0"N 024°01'20.5"E
(FAF) RIA D6.96 RIA R359.00°	57°02'06.3"N 023°59'54.2"E
(SDF) RIA D2.20 RIA R359.00°	56°57'25.5"N 023°58'32.5"E
(MAPT) RIA D0.88 RIA R359.00°	56°56'07.2"N 023°58'09.8"E
THR RWY 18	56°56'06.25"N 023°58'23.08"E
Final approach descent angle is 2.98°	