

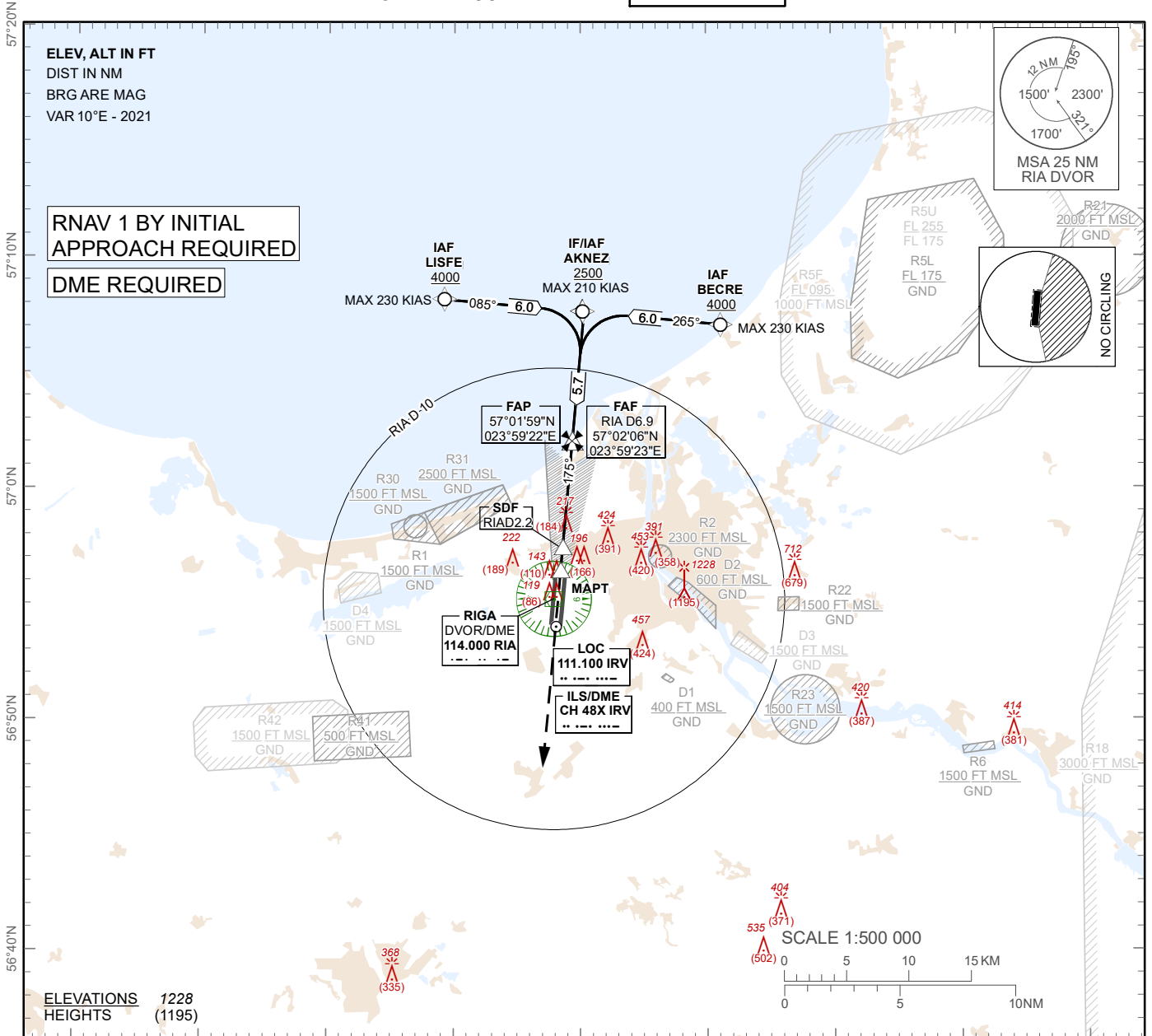
**INSTRUMENT
APPROACH
CHART – ICAO**

AERODROME ELEV 37ft
HEIGHTS RELATED TO
THR RWY 18 - ELEV 33 ft

APP 129.925
134.850 (HX)
TWR 118.105
ATIS 120.180

RIGA (EVRA)

ILS Y or LOC Y RWY 18



TRANSITION ALT 5000 FT

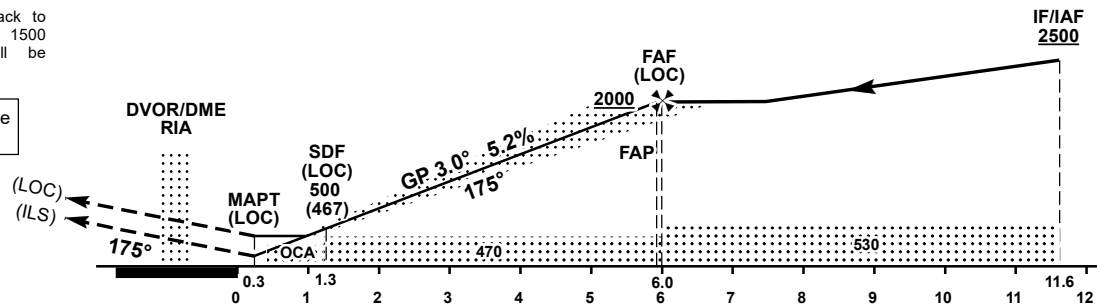
IRV DME READING REFERS TO THR 18

MISSED APPROACH
Climb on runway track to 2500, after passing 1500 radar vectoring will be provided

COM FAILURE see EVRA AD 2.22

ILS RDH 52

THR ELEV 33 FT
NM from THR RWY 18



OCA (H)		A	B	C	D
Straight-in Approach	ILS Cat. I	233 (200)			
	ILS Cat. II	(85)	(102)	(116)	(128)
	LOC	410 (380)			
Circling		530 (500)	630 (600)	730 (690)	

Timing not authorized for defining the MAPT							
GS	kt	80	100	120	140	160	180
Rate of descent (5.2%)	ft/min	420	530	640	740	850	960
FAF-MAPT (5.7 NM)	min:sec	04:17	03:25	02:51	02:26	02:08	01:54

Table for ILS approach

DME IRV	5	4	3	2	1
DIST THR	5	4	3	2	1
ALT	1700	1380	1060	730	410
HGT	(1667)	(1347)	(1027)	(697)	(377)

Table for LOC approach

DME RIA	5.9	4.9	3.9	2.9	1.9
DIST THR	5	4	3	2	1
ALT	1680	1360	1040	720	410
HGT	(1647)	(1327)	(1007)	(687)	(377)

For data tabulation see verso

Changes: procedure updated, R41, R42 established.

RIGA (EVRA)

AERONAUTICAL DATA TABULATION

INSTRUMENT
APPROACH
CHART – ICAO

ILS Y or LOC Y RWY 18

TABULAR DESCRIPTION

Identification Procedure		ILS or LOC RWY 18						MAG VAR 10.0°E (2021)		
Leg sequence	Path descriptor	Waypoint Identifier	Fly - over	Course °M(°T)	Distance (NM)	Turn Direction	Altitude FT	Speed KT	VPA (°) / TCH (FT)	Navigation Specification
INA LISFE	IF	LISFE	-	-	-	-	+4000	-230	-	RNAV 1
	TF	AKNEZ	-	085(095.0)	6	R	+2500	-	-	RNAV 1
INA BECRE	IF	BECRE	-	-	-	-	+4000	-230	-	RNAV 1
	TF	AKNEZ	-	265(275.3)	6	L	+2500	-	-	RNAV 1
INA AKNEZ	IF	AKNEZ	-	-	-	-	+2500	-210	-	RNAV 1

ILS Y or LOC Y approach to RWY18 from BECRE, LISFE, AKNEZ	
Fix/point	Coordinates
BECRE (IAF)	57°07'06.5"N 024°11'15.8"E
LISFE (IAF)	57°08'11.4"N 023°49'20.2"E
AKNEZ (IF/IAF)	57°07'39.5"N 024°00'18.1"E
FAP (ILS)	57°01'59.2"N 023°59'21.5"E
FAF RIA D6.91 (LOC)	57°02'05.6"N 023°59'22.6"E
SDF RIA D2.20 (LOC)	56°57'24.6"N 023°58'36.1"E
MAPT RIA D1.19 (LOC)	56°56'24.1"N 023°58'26.1"E
THR RWY 18	56°56'06.25"N 023°58'23.08"E
IRV LOC	56°54'04.3"N 023°58'03.0"E
RIA DVOR/DME	56°55'15.1"N 023°57'54.7"E
Final approach descent angle is 3.00°	