

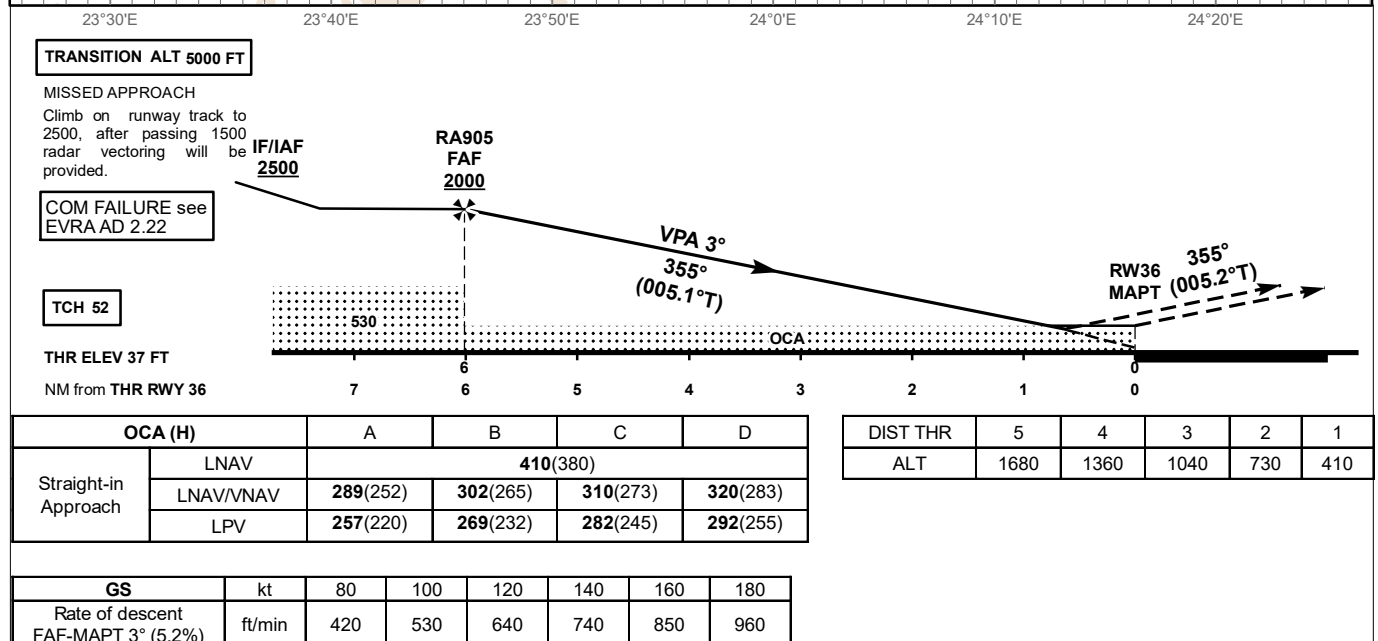
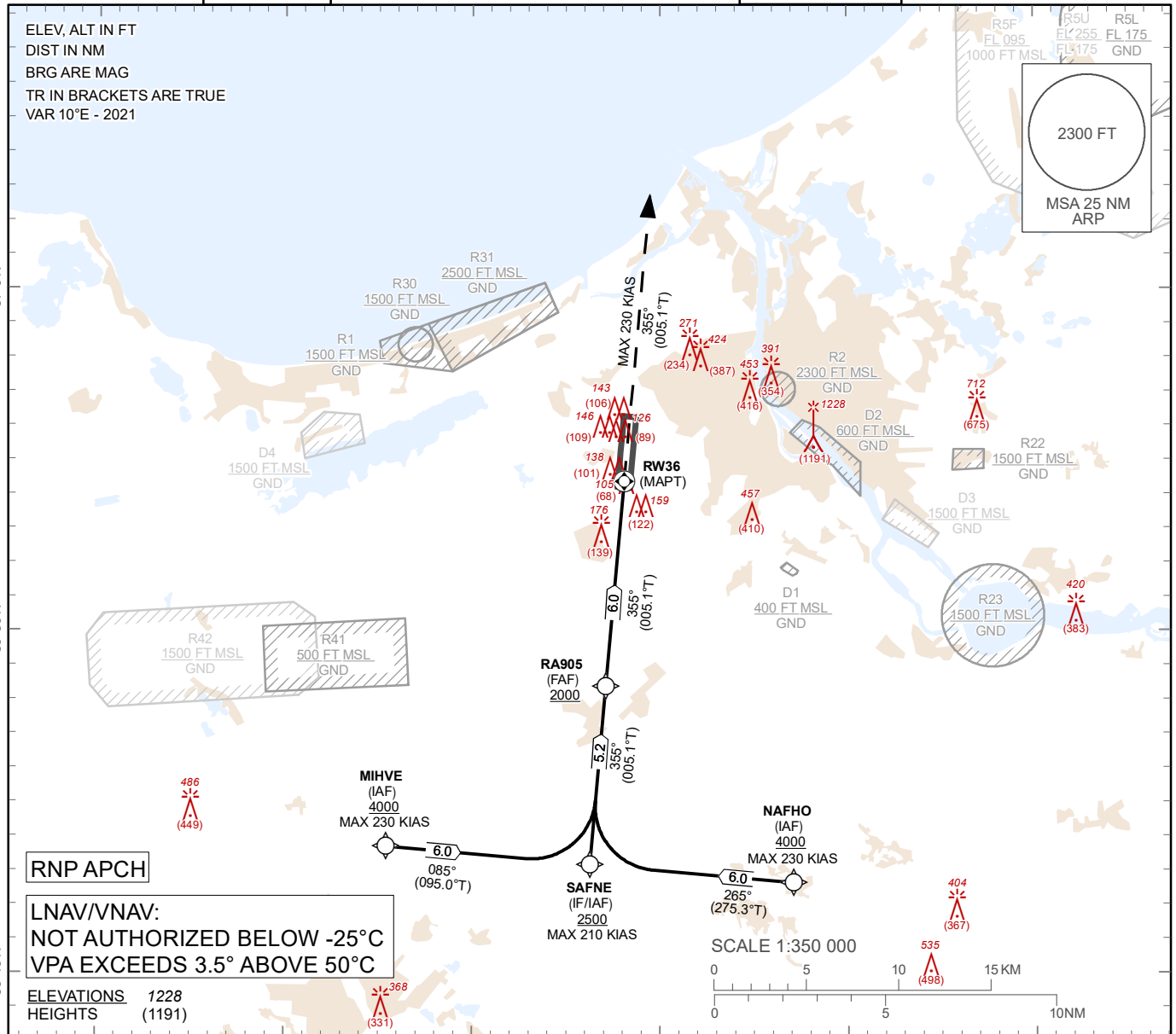
**INSTRUMENT
APPROACH
CHART – ICAO**

**SBAS
CH 54935
E36A**

**AERODROME ELEV 37 ft
HEIGHTS RELATED TO
THR RWY 36 - ELEV 37 ft**

APP 129.925
134.850 (HX)
TWR 118.105
ATIS 120.180

**RIGA (EVRA)
RNP Y RWY 36**



Changes: procedure updated, R41, R42 established, editorial.

For data tabulation see verso

05 SEP 2024

RIGA (EVRA)	SBAS CH 54935 E36A	AERODROME ELEV 37 ft HEIGHTS RELATED TO THR RWY 36 - ELEV 37 ft	INSTRUMENT APPROACH CHART – ICAO
RNP Y RWY 36			

TABULAR DESCRIPTION

RNP Y RWY 36											
Serial Number	Path Descriptor	Waypoint Identifier	Fly-over	Course °M(°T)	Magnetic Variation	Distance (NM)	Turn Direction	Altitude (FT)	Speed (KT)	VPA (°) / TCH (FT)	Navigation Specification
010	IF	MIHVE	-	-	+10.0	-	-	+4000	-230	-	RNAV 1
020	TF	SAFNE	-	085(095.0)	+10.0	6.0	L	+2500	-	-	RNAV 1
010	IF	NAFHO	-	-	+10.0	-	-	+4000	-230	-	RNAV 1
020	TF	SAFNE	-	265(275.3)	+10.0	6.0	R	+2500	-	-	RNAV 1
010	IF	SAFNE	-	-	+10.0	-	-	+2500	-210	-	RNAV 1
010	IF	SAFNE	-	-	+10.0	-	-	+2500	-210	-	RNAV 1
020	TF	RA905	-	355(005.1)	+10.0	5.2	-	+2000	-	-	RNP APCH
030	TF	RW36	Y	355(005.1)	+10.0	6.0	-	@89	-	-3.0/52	RNP APCH
040	CA	-	-	355(005.1)	+10.0	-	-	@2500	-230	-	RNP APCH

WAYPOINT LIST

RNP Y RWY 36		
Waypoint Identifier	Coordinates	
MIHVE	56°43'43.50"N	023°45'25.07"E
NAFHO	56°42'39.28"N	024°07'06.54"E
SAFNE	56°43'11.86"N	023°56'15.96"E
RA905	56°48'24.67"N	023°57'07.17"E
RW36	56°54'23.22"N	023°58'06.08"E

FAS DATA BLOCK**INPUT DATA**

Operation Type	0
SBAS Provider	1 (EGNOS)
Airport Identifier	EVRA
Runway	36
Runway Letter	0 (None)
Approach Performance Designator	0
Route Indicator	Y
Reference Path Data Selector	0
Reference Path Identifier	E36A
LTP/FTP Latitude	565423.2145N
LTP/FTP Longitude	0235806.1225E
LTP/FTP Ellipsoidal Height (metres)	32.0
FPAP Latitude	565615.0800N
Delta FPAP Latitude (seconds)	111.8655
FPAP Longitude	0235824.5785E
Delta FPAP Longitude (seconds)	18.4560
Threshold Crossing Height	15.8
TCH Units Selector	1 (meters)
Glidepath Angle (degrees)	3.00
Course Width (metres)	104.00
Length Offset (metres)	280
HAL (metres)	40.0
VAL (metres)	35.0

OUTPUT DATA

Data Block	10 01 12 16 05 24 C8 00 01 36 33 05 DD ED 6B 18 55 3E 49 0A 40 15 F3 69 03 30 90 00 3C 81 2C 01 60 23 C8 AF EA F0 62 DE
Calculated CRC Value	EAF062DE
Supplied CRC Value	EAF062DE
Comparison Result	OK

REQUIRED ADDITIONAL DATA

ICAO Code	EV
LTP/FTP Orthometric Height (metres)	11.3

EUROCONTROL FAS DB tool Version 3.2.1