

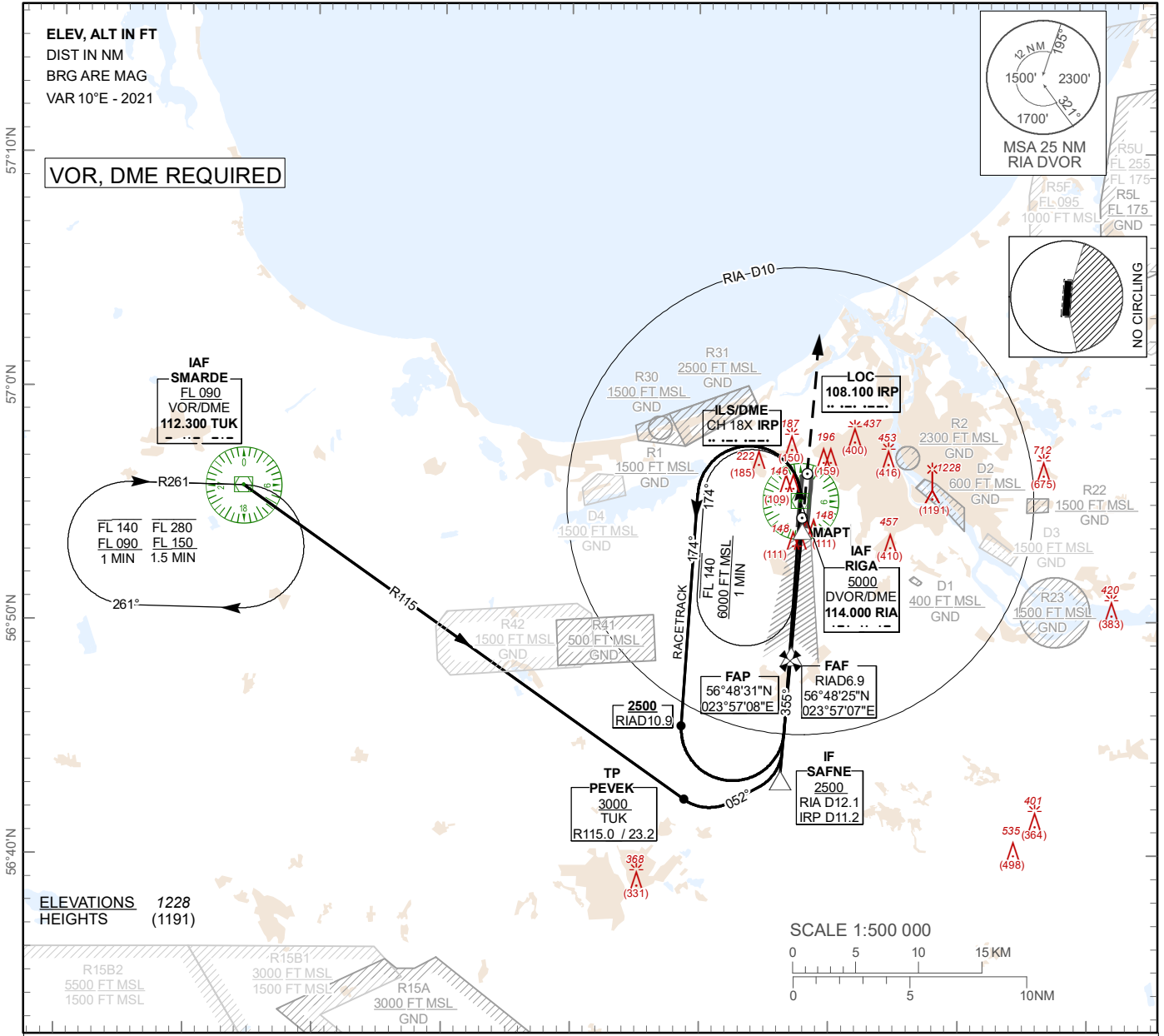
**INSTRUMENT
APPROACH
CHART – ICAO**

AERODROME ELEV 37 ft
HEIGHTS RELATED TO
THR RWY 36 - ELEV 37 ft

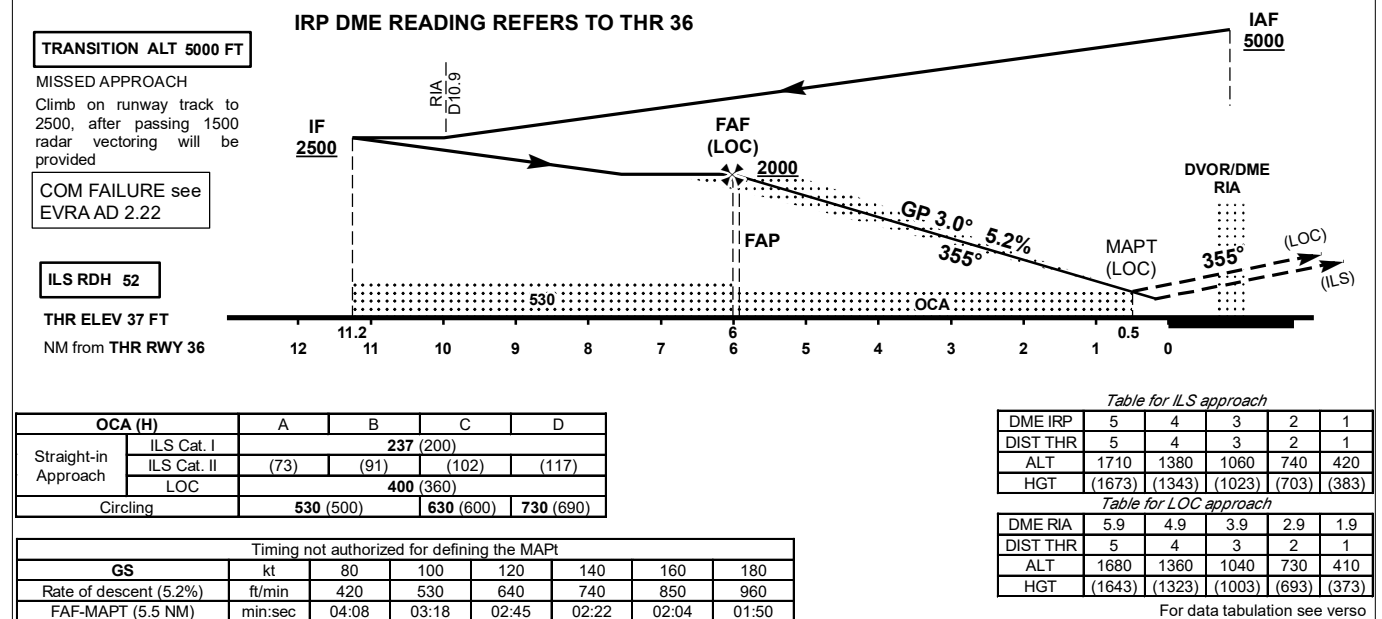
APP 129.925
134.850 (HX)
TWR 118.105
ATIS 120.180

RIGA (EVRA)

ILS Z or LOC Z RWY 36



23°0'E 23°10'E 23°20'E 23°30'E 23°40'E 23°50'E 24°0'E 24°10'E 24°20'E



Changes: procedure updated, R41, R42 established.

RIGA (EVRA)

AERONAUTICAL DATA TABULATION

INSTRUMENT
APPROACH
CHART – ICAO

ILS Z or LOC Z RWY 36

ILS Z or LOC Z approach to RWY36 from RIA DVOR/DME (IAF), TUK VOR/DME (IAF)	
Fix/point	Coordinates
RIA DVOR/DME (IAF)	56°55'15.1"N 023°57'54.7"E
TUK VOR/DME (IAF)	56°55'50.1"N 023°14'23.9"E
PEVEK (TP) R115.00° D23.17 TUK	56°42'29.7"N 023°48'50.1"E
SAFNE (IF) IRP D11.25; RIA D12.12	56°43'11.9"N 023°56'16.0"E
FAP (ILS)	56°48'31.0"N 023°57'08.2"E
FAF RIA D6.87 (LOC)	56°48'24.7"N 023°57'07.2"E
MAPT RIA D1.37 (LOC)	56°53'53.4"N 023°58'01.2"E
THR RWY 36	56°54'23.22"N 023°58'06.08"E
IRP LOC	56°56'24.9"N 023°58'26.2"E
Final approach descent angle is 3.00°	