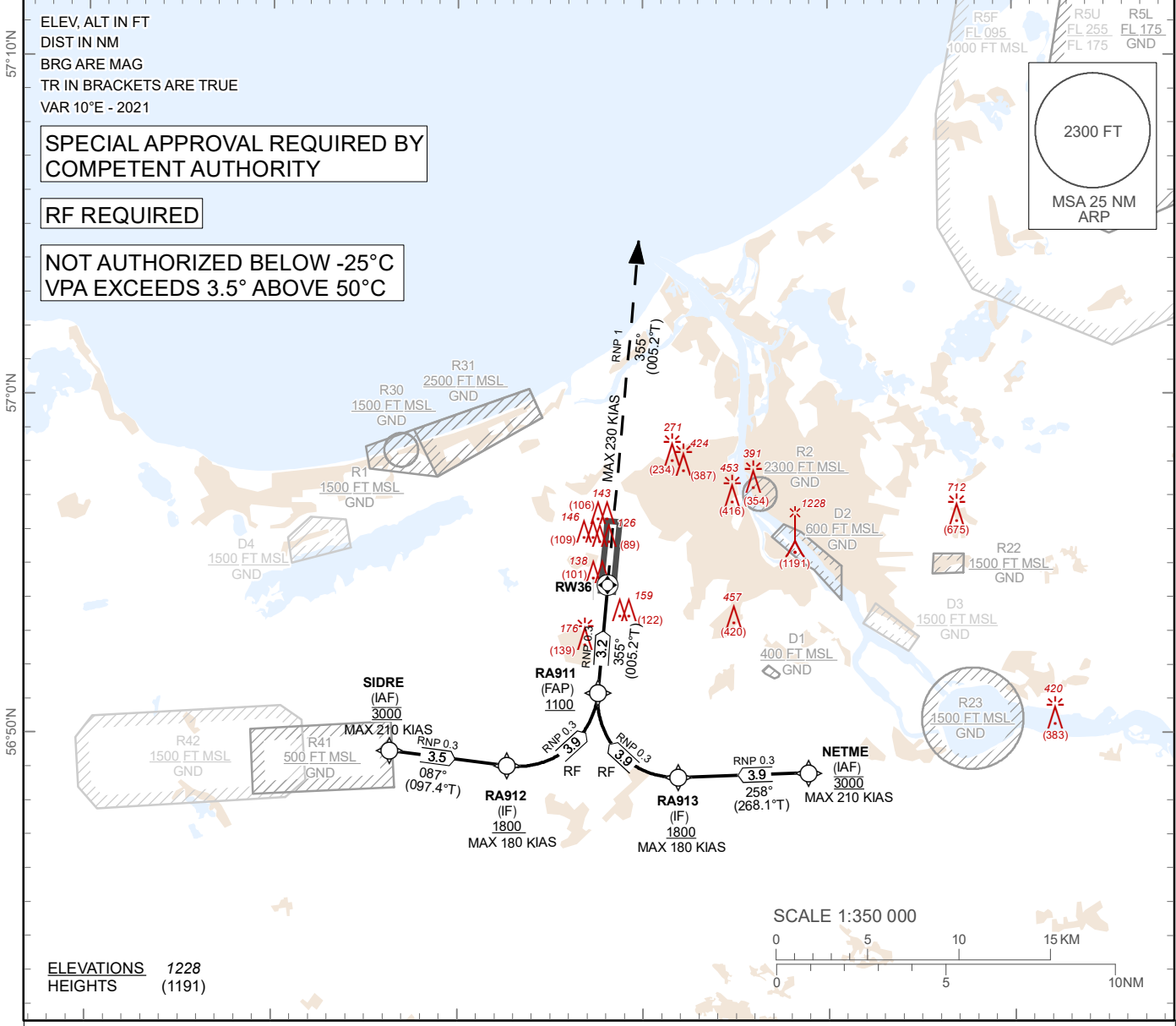


**INSTRUMENT
APPROACH
CHART – ICAO**

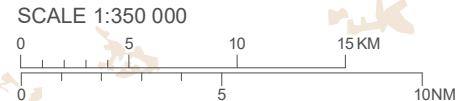
**AERODROME ELEV 37 ft
HEIGHTS RELATED TO
THR RWY 36 - ELEV 37 ft**

APP 129.925
134.850 (HX)
TWR 118.105
ATIS 120.180

**RIGA (EVRA)
RNP Z RWY 36 (AR)**



ELEVATIONS 1228
HEIGHTS (1191)



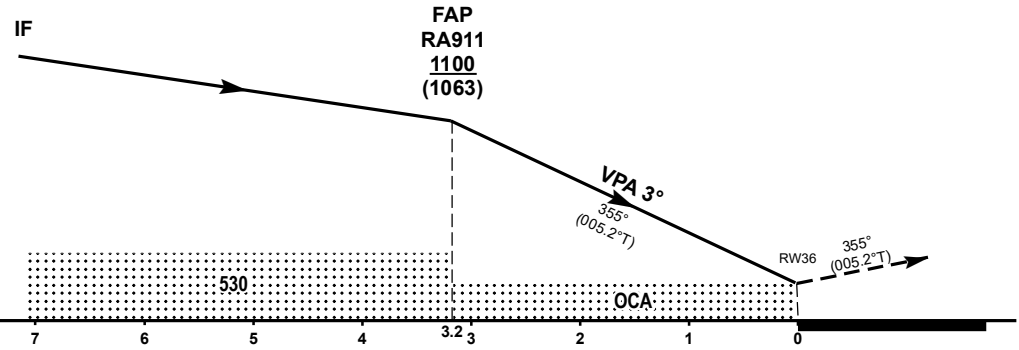
TRANSITION ALT 5000 FT

MISSED APPROACH
Climb on runway track to 2500, after passing 1500 radar vectoring will be provided

COM FAILURE see EVRA AD 2.22

RDH 52

THR36 ELEV 37 FT
NM from THR RWY 36



OCA (H)	A	B	C	D
RNP 0.3	314 (277)	326 (289)	334 (297)	345 (308)

DIST THR	3	2	1
ALT	1044	721	403
HGT	(1007)	(684)	(366)

GS	kt	80	100	120	140	160	180
Rate of descent (5.2%)	ft/min	420	530	640	740	850	960

Changes: procedure updated, R41, R42 established.

For data tabulation see verso

RIGA (EVRA)

AERONAUTICAL DATA TABULATION

INSTRUMENT
APPROACH
CHART – ICAO

RNP Z RWY 36 (AR)

TABULAR DESCRIPTION

RNP Z RWY 36 (AR)											
Serial Number	Path Descriptor	Waypoint Identifier	Fly-over	Course °M (°T)	Magnetic Variation (°)	Distance NM	Turn Direction	Altitude FT	Speed KT	VPA (°)/TCH(FT)	Navigation Specification
10	IF	SIDRE	-	-	-	-	-	@3000	-210	-	RNP 0.3
20	TF	RA912	-	087 (097.4)	+10.0	3.5	-	+1800	-180	-3.2	RNP 0.3
30	RF Centre: RA920 r = 2.4 NM	RA911	-	087 (097.3)	+10.0	3.9	L	+1100	-	-1.7	RNP 0.3
10	IF	NETME	-	-	-	-	-	@3000	-210	-	RNP 0.3
20	TF	RA913	-	258 (268.1)	+10.0	3.9	-	+1800	-180	-2.9	RNP 0.3
30	RF Centre: RA921 r = 2.3 NM	RA911	-	258 (268.1)	+10.0	3.9	R	+1100	-	-1.7	RNP 0.3
40	TF	RW36	Y	355 (005.2)	+10.0	3.2	-	@89	-	-3.0/52	RNP 0.3
50	CA	-	-	355 (005.2)	+10.0	-	-	@2500	-230	+1.4	RNP 1

WAYPOINT LIST

RNP Z RWY 36 (AR)		
Waypoint Identifier	Coordinates	
SIDRE	56°49'31.08"N	023°46'20.70"E
RA912	56°49'04.20"N	023°52'40.23"E
RA911	56°51'13.92"N	023°57'34.95"E
NETME	56°48'51.49"N	024°08'54.70"E
RA913	56°48'43.88"N	024°01'53.50"E
RW36	56°54'23.22"N	023°58'06.08"E
RF Arc Centre Identifier	Coordinates	
RA920	56°51'26.72"N	023°53'13.70"E
RA921	56°51'01.51"N	024°01'45.25"E