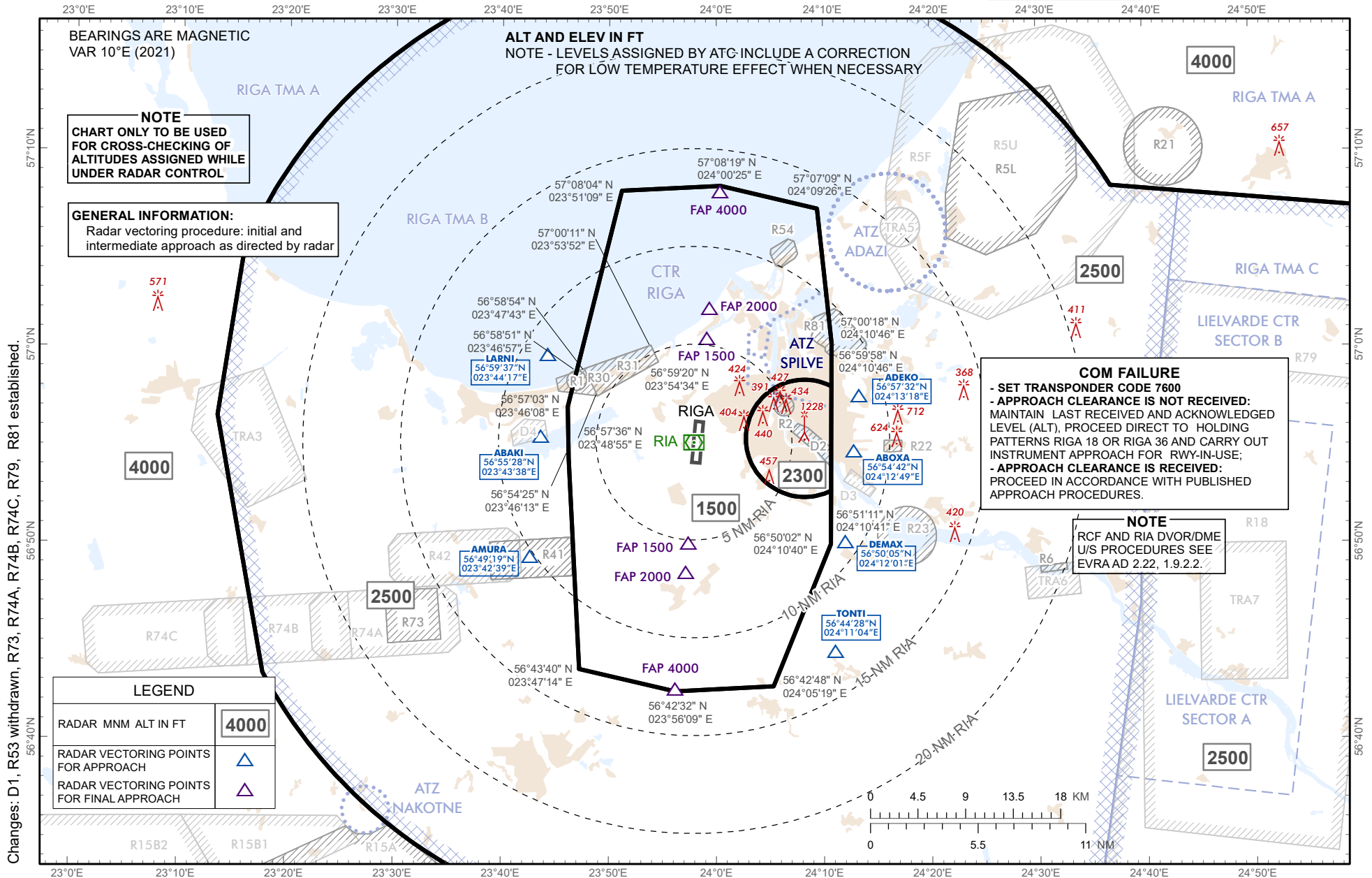


ATC SURVEILLANCE MINIMUM
ALTITUDE CHART - ICAO

AERODROME ELEV 37 FT
TRANSITION ALT 5000 FT

APP	129.925
TWR	134.850(HX)
ATIS	118.105
	120.180

RIGA (EVRA)



BEARINGS ARE MAGNETIC
VAR 10°E (2021)

ALT AND ELEV IN FT
NOTE - LEVELS ASSIGNED BY ATC INCLUDE A CORRECTION
FOR LOW TEMPERATURE EFFECT WHEN NECESSARY

NOTE
CHART ONLY TO BE USED
FOR CROSS-CHECKING OF
ALTITUDES ASSIGNED WHILE
UNDER RADAR CONTROL

GENERAL INFORMATION:
Radar vectoring procedure: initial and
intermediate approach as directed by radar

COM FAILURE
- SET TRANSPONDER CODE 7600
- APPROACH CLEARANCE IS NOT RECEIVED:
MAINTAIN LAST RECEIVED AND ACKNOWLEDGED
LEVEL (ALT), PROCEED DIRECT TO HOLDING
PATTERNS RIGA 18 OR RIGA 36 AND CARRY OUT
INSTRUMENT APPROACH FOR RWY-IN-USE;
- APPROACH CLEARANCE IS RECEIVED:
PROCEED IN ACCORDANCE WITH PUBLISHED
APPROACH PROCEDURES.

NOTE
RCF AND RIA DVOR/DME
U/S PROCEDURES SEE
EVRA AD 2.22, 1.9.2.2.

LEGEND	
RADAR MNM ALT IN FT	4000
RADAR VECTORING POINTS FOR APPROACH	▲
RADAR VECTORING POINTS FOR FINAL APPROACH	▲

Changes: D1, R53 withdrawn, R73, R74A, R74B, R74C, R79, R81 established.

INTENTIONALLY LEFT BLANK