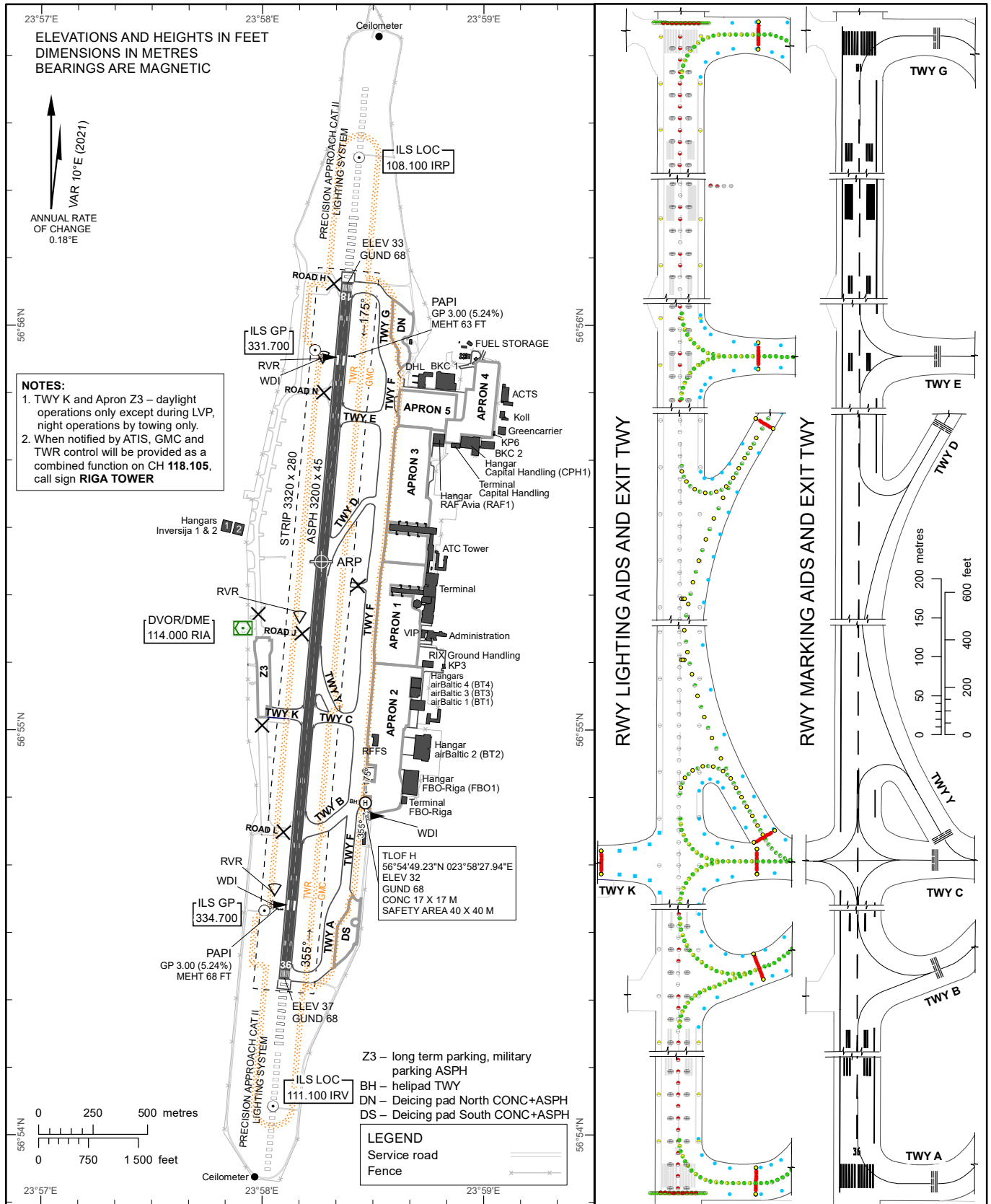


AERODROME CHART – ICAO 56°55'25"N
023°58'16"E ELEV 37 FT

TWR	118.105
GMC	118.805
APRON	131.605
ATIS	120.180

RIGA



RWY	TRUE DIRECTION	THR	BEARING STRENGTH		
18	185.16°	56°56'06.25"N 023°58'23.08"E	RWY	ASPH	PCN 110/F/A/W/T
			TWY A, Y	ASPH	PCN 65/F/A/W/T
			TWY B	ASPH	PCN 93/R/C/W/T
36	005.15°	56°54'23.22"N 023°58'06.08"E	TWY BH	CONC+ASPH	PCN 100/R/C/W/T
			TWY C	ASPH	PCN 97/R/C/W/T
			TWY D	ASPH	PCN 88/F/C/W/T
			TWY E	ASPH	PCN 71/F/A/W/T
			TWY F	CONC+ASPH	PCN 77/F/A/W/T
FATO 18	185.16°	56°54'49.72"N 023°58'28.02"E	TWY G	ASPH	PCN 95/R/C/W/T
FATO 36	005.16°	56°54'48.75"N 023°58'27.86"E	TWY K	ASPH	PCN 120/R/C/W/T

Remarks:
 1. APPROACH and RWY lighting see EVRA AD 2.14.
 2. RWY marking see EVRA AD 2.9.
 3. The rapid-exit TWY D is designed for code C (MAX wingspan 36 M) or smaller ACFT.
 4. The rapid-exit TWY Y when using RWY 36 is designed for code C (MAX wingspan 36 M) or smaller ACFT.

Changes: editorial.

INTENTIONALLY LEFT BLANK