



REPUBLIC OF LATVIA

Phone: +371 67300664
Fax: +371 67300660
Email: ais@lgs.lv
AFS: EVRAYNYX
URL: <https://ais.lgs.lv>

State Joint-stock Company
"Latvijas gaisa satiksme"
Aeronautical Information Service
Muzeju iela 3, Lidosta "Rīga"
Mārupes novads, LV-1053,
Latvija

AIP SUP: 004/2019
Effective Date: 23-MAY-2019
End date: 17-JUL-2019
Publication Date: 09-MAY-2019

JURMALA AIRPORT AD (EVJA) - JURMALA ATZ ESTABLISHED

This supplement provides the new information about the establishment of Jurmala ATZ and the procedures for VFR flights used in the ATZ. This information will be incorporated in AIP WEF 18 JUL 2019.

1. EVJA AD 2.17 ATS AIRSPACE

| | | |
|---|---|--|
| 1 | Designation and lateral limits | JURMALA ATZ 570829N 0225546E - 570832N 0230954E - 565325N 0233421E - 565045N 0233612E - 564256N 0232625E - 564345N 0231221E - 570200N 0224447E - 570829N 0225546E |
| 2 | Vertical limits | 1500 FT ALT/GND |
| 3 | Airspace classification | G |
| 4 | ATS unit call sign / Language(s) | NIL |
| 5 | Transition altitude | 5000 FT ALT |
| 6 | Hours of applicability | NIL |
| 7 | Remarks | NIL |

2. EVJA AD 2.22 FLIGHT PROCEDURES

1. PROCEDURES FOR VFR FLIGHTS IN JURMALA ATZ

1.1 For VFR flights to, from and at Jurmala Airport AD, FREQ 132.030 (8.33 channel) should be used by the pilots for self-announcing of their positions and intentions in the blind or for air-to-air communications, as a common traffic advisory frequency (CTAF).

1.2 Pilots have to transmit blind on FREQ 132.030 (8.33 channel) the following information:

Inbound traffic:

- call sign, altitude, location of the aircraft and further intentions - 3 minutes before entering the ATZ;
- RWY to be used for landing;
- entering the traffic pattern and altitude (downwind, base legs and final);
- vacating the RWY;

Outbound traffic:

- intention for departure;
- RWY to be used for take-off;
- intended flight direction and altitude or circling.

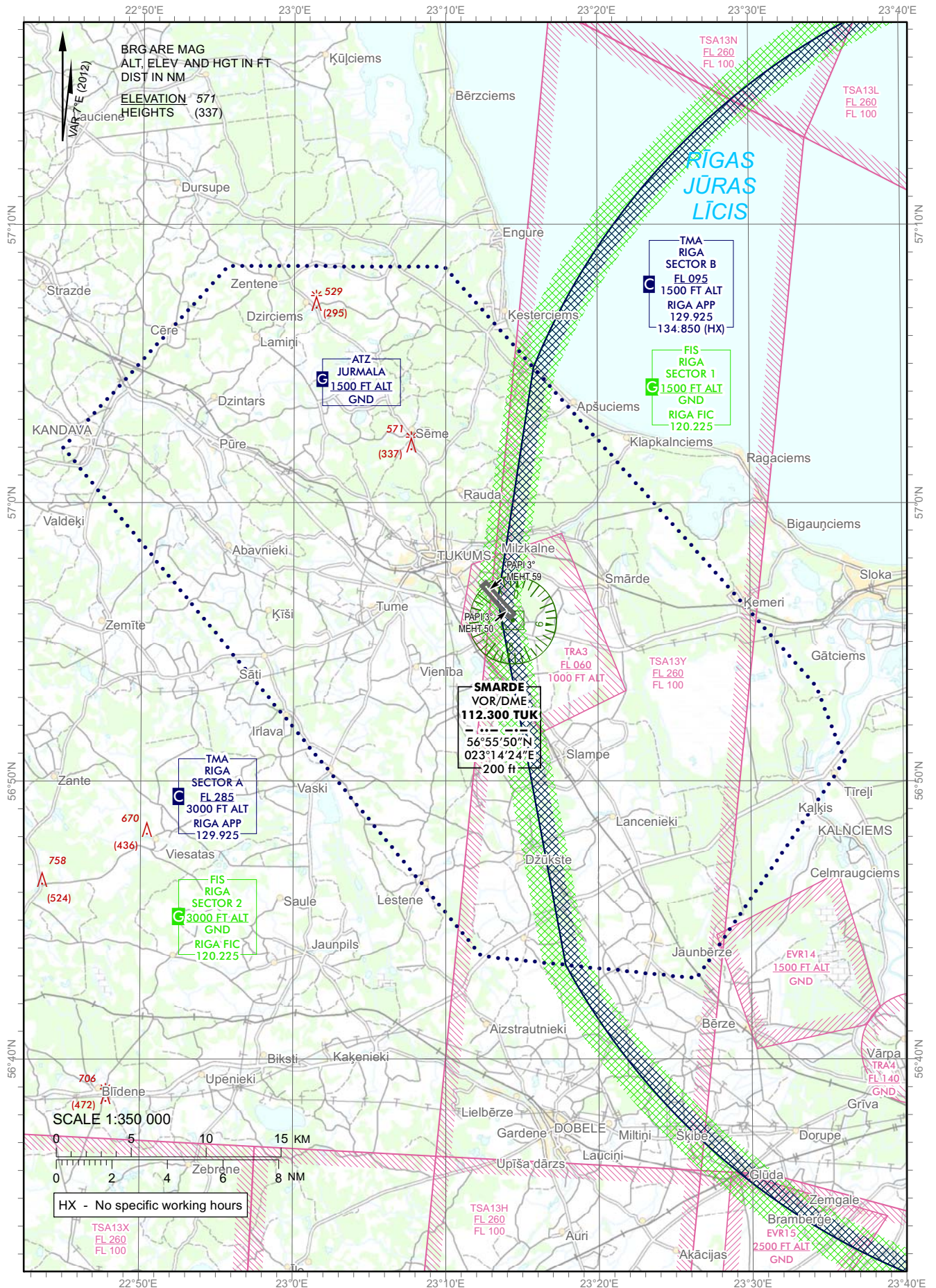
Example of self-announcing for inbound traffic:

YLKST, entering Jurmala ATZ from the north at 1000 feet, landing Jurmala RWY 31
YLKST, entering base RWY 31, altitude 1000 feet, Jurmala
YLKST, landing Jurmala, RWY vacated

Example of self-announcing for outbound traffic:

YLKST, departing Jurmala RWY 31 to the North, climbing 1000 feet

A visualization of Jurmala ATZ is available in the Appendix 1.



THIS PAGE INTENTIONALLY LEFT