



REPUBLIC OF LATVIA

AIRAC

Tel: +371 67300664
Fax: +371 67300660
Email: ais@lgs.lv
AFS: EVRAYNYX
URL: https://ais.lgs.lv

State Joint-stock Company
"Latvijas gaisa satiksme"
Aeronautical
Information Service.
Muzeju iela 3
Lidosta "Rīga"
Mārupes pag., Mārupes nov.
LV-1053, Latvija

AIRAC AIP SUP 014/2026
Effective from 14 MAY 2026
to 05 AUG 2026
Published on 08 MAY 2026

RIGA AERODROME (EVRA) – RESTRICTIONS DUE TO MAINTENANCE WORKS ON TAXIWAYS E AND F

Replaces AIRAC AIP SUP 011/2026

Incorporates NOTAM A2079/26

The following discrepancies have been identified and corrected:

- **Table 1:** Z3 standard taxi route ARR 36 is corrected to G-DN-G*-RWY-K.
- **Graphical appendices:** Stand 461 is corrected to stand 462; Intermediate Holding Position (IHP) G1 is corrected to IHP G2, and IHP G2 is corrected to IHP G1.

1. TAXIWAY CLOSURES (PHASE 1) (see Appendix 1)

Taxiway closures H24:

1.1 TWY E closed between RWY 18/36 and TWY F.

1.2 TWY F closed between TWY D and TWY E.

2. OPERATING CONSTRAINTS (see Appendix 1)

2.1 Arrival Runway 36

For aircraft up to code C runway exit expected via TWY D or TWY G.

For code D or larger aircraft, flight crews shall exit via TWY G, make turnaround under "Follow-me" guidance on Deicing pad north, backtrack on runway and exit via TWY Y. Additional taxi time up to 15 min should be expected.

2.2 Departure Runway 18

For aircraft up to code C enter runway via TWY G.

For code D or larger aircraft, lining-up at RWY 18 is only possible via TWY C then backtrack on runway, exit via TWY G, make turnaround under "Follow-me" guidance on De-icing pad north, and enter runway via TWY G. Additional taxi time up to 15 min should be expected.

2.3 Taxiway F (portion between taxiway E and taxiway G)

Aircraft with MAX wingspan 36 M (code C) only allowed. Taxiing only under "Follow-me" guidance. IHP lights, TWY centre lights and TWY edge lights are deactivated.

2.4 Stands 501, 502 and 503

Downgraded to aircraft with a wingspan not exceeding 42.40 M.

Note: Code D aircraft with a wingspan not exceeding 42.40 M may taxi via Taxilanes V, W and TWY E under "Follow-me" guidance.

2.5 Remote de-icing pad north

Remote de-icing pad north positions DN2, DN3 and DN4 are withdrawn.

Remote de-icing pad north position DN1 may be used for parking and ground handling, including engine run-up at idle power only, for aircraft with a wingspan not exceeding 42.40 M. Operations are permitted only under "Follow-me" guidance, and aircraft for departure will be towed out from DN1 position.

3. STANDARD TAXI ROUTES AND STAND CHARACTERISTICS

Standard taxi routes and stand characteristics are amended as shown in Table 1 and Table 2 below.

Table 1 Stand characteristics

Apron	Stand	STANDARD TAXI ROUTES				Push-back required	MAX wing-span (M)	MAX length (M)
		ARR 18	DEP 18	ARR 36	DEP 36			
1	100	B-F	Q-F-C-RWY-G-DN-G*	G-DN-G*-RWY-Y-C-F	Q-F-A	N	64.99	75.50
1	107	B-F-S	S-F-C-RWY-G-DN-G*	G-DN-G*-RWY-Y-C-F-S	S-F-A	Y	51.99	61.50
1	114	B-F	F-C-RWY-G-DN-G*	G-DN-G*-RWY-Y-C-F	F-A	Y	51.99	61.50
1	115	B-F	F-C-RWY-G-DN-G*	G-DN-G*-RWY-Y-C-F	F-A	Y	42.00	48.00
3	300	B-F-U1	U1-F-C-RWY-G-DN-G*	G-DN-G*-RWY-Y-C-F-U1	U1-F-A	Y	64.99	75.99
3	301	B-F-U1	U1-F-C-RWY-G-DN-G*	G-DN-G*-RWY-Y-C-F-U1	U1-F-A	Y	64.99	75.40
Z3	Z3	K	K-RWY-G-DN-G*	G-DN-G*-RWY-K	K-C-F-A	N	42.36	45.09
3	311	Y-C-F-V-W	W-E-F-G	D-V-W	W-V-F-A	Y	35.99	38.71
3	312	Y-C-F-V-W	W-E-F-G	D-V-W	W-V-F-A	Y	35.99	38.71
3	313	Y-C-F-V-W	W-E-F-G	D-V-W	W-V-F-A	Y	35.99	38.71
3	314	Y-C-F-V-W	W-E-F-G	D-V-W	W-V-F-A	Y	35.99	38.71
3	315	Y-C-F-V-W	W-E-F-G	D-V-W	W-V-F-A	Y	35.99	38.71
3	316	Y-C-F-V-W	W-E-F-G	D-V-W	W-V-F-A	Y	35.99	38.71
3	317	Y-C-F-V-W	W-E-F-G	D-V-W	W-V-F-A	Y	31.99	35.53
3	321	Y-C-F-V-W	W-E-F-G	D-V-W	W-V-F-A	Y	35.99	45.06
3	322	Y-C-F-V-W	W-E-F-G	D-V-W	W-V-F-A	Y	35.99	45.06
3	323	Y-C-F-V-W	W-E-F-G	D-V-W	W-V-F-A	Y	35.99	45.06
3	324	Y-C-F-V-W	W-E-F-G	D-V-W	W-V-F-A	Y	35.99	45.06
3	325	Y-C-F-V-W	W-E-F-G	D-V-W	W-V-F-A	Y	35.99	45.06
3	326	Y-C-F-V-W	W-E-F-G	D-V-W	W-V-F-A	Y	35.99	44.51
3	327	Y-C-F-V-W	W-E-F-G	D-V-W	W-V-F-A	Y	33.99	40.74

4	461	Y-C-F-V-W-E-E1	E1-E-F-G	D-V-W-E-E1	E1-E-W-V-F-A	Y	23.99	30.30
4	462	Y-C-F-V-W-E-E1	E1-E-F-G	D-V-W-E-E1	E1-E-W-V-F-A	Y	28.65	30.30
5	501	B-F-V-W-E	E-W-V-F-C-RWY-G-DN-G*	G-DN-G*-RWY-Y-C-F-V-W-E	E-W-V-F-A	Y	42.40	54.50
5	502	B-F-V-W-E	E-W-V-F-C-RWY-G-DN-G*	G-DN-G*-RWY-Y-C-F-V-W-E	E-W-V-F-A	Y	42.40	54.50
5	503	B-F-V-W-E	E-W-V-F-C-RWY-G-DN-G*	G-DN-G*-RWY-Y-C-F-V-W-E	E-W-V-F-A	Y	42.40	54.50
5	511	Y-C-F-V-W-E	E-F-G	D-V-W-E	E-W-V-F-A	Y	35.99	44.51
5	512	Y-C-F-V-W-E	E-F-G	D-V-W-E	E-W-V-F-A	Y	35.99	44.51
5	513	Y-C-F-V-W-E	E-F-G	D-V-W-E	E-W-V-F-A	Y	35.99	44.51
5	514	Y-C-F-V-W-E	E-F-G	D-V-W-E	E-W-V-F-A	Y	35.99	44.51

* - only under "Follow-me" guidance

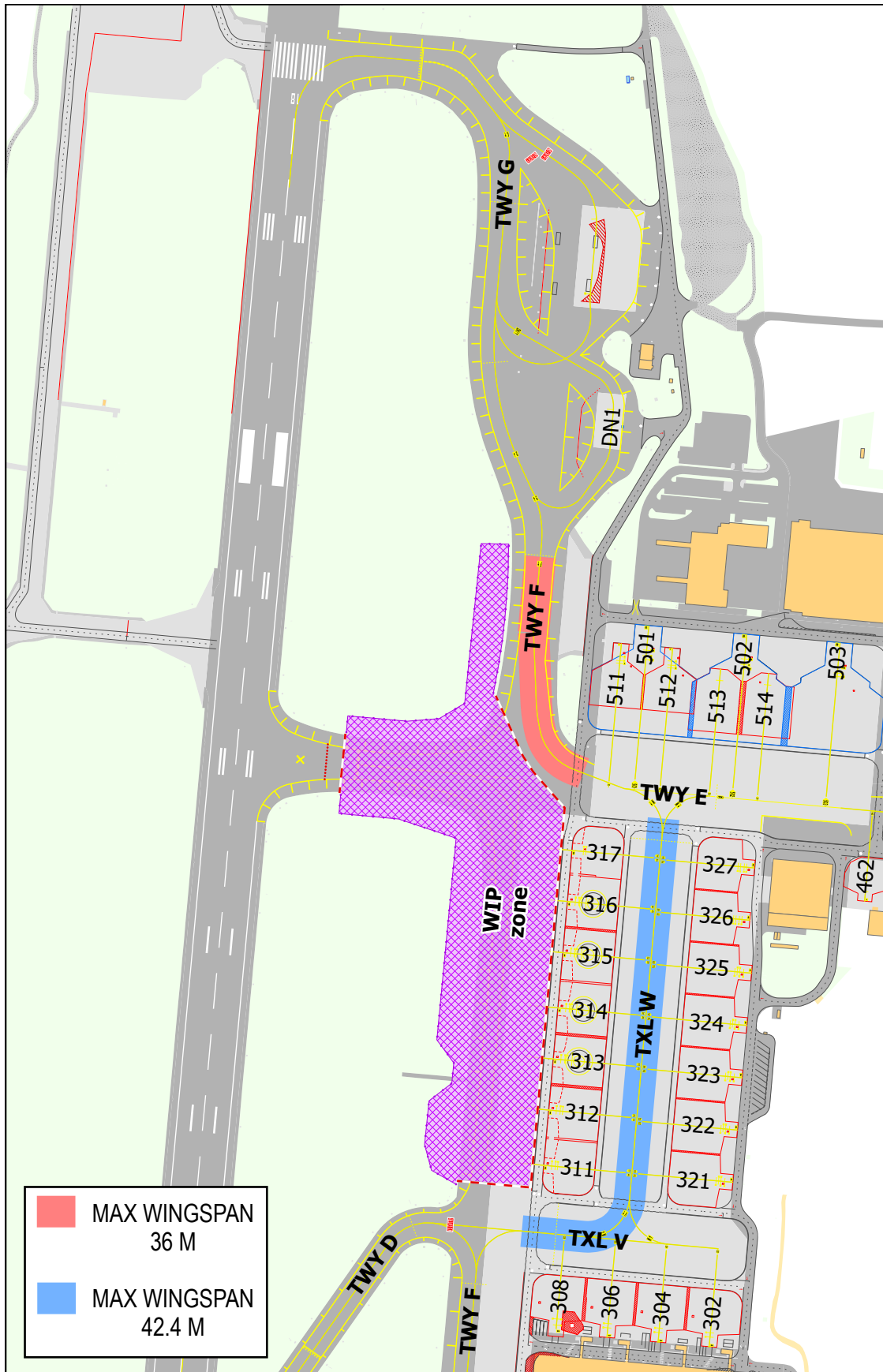
Table 2 Helicopter stand characteristics

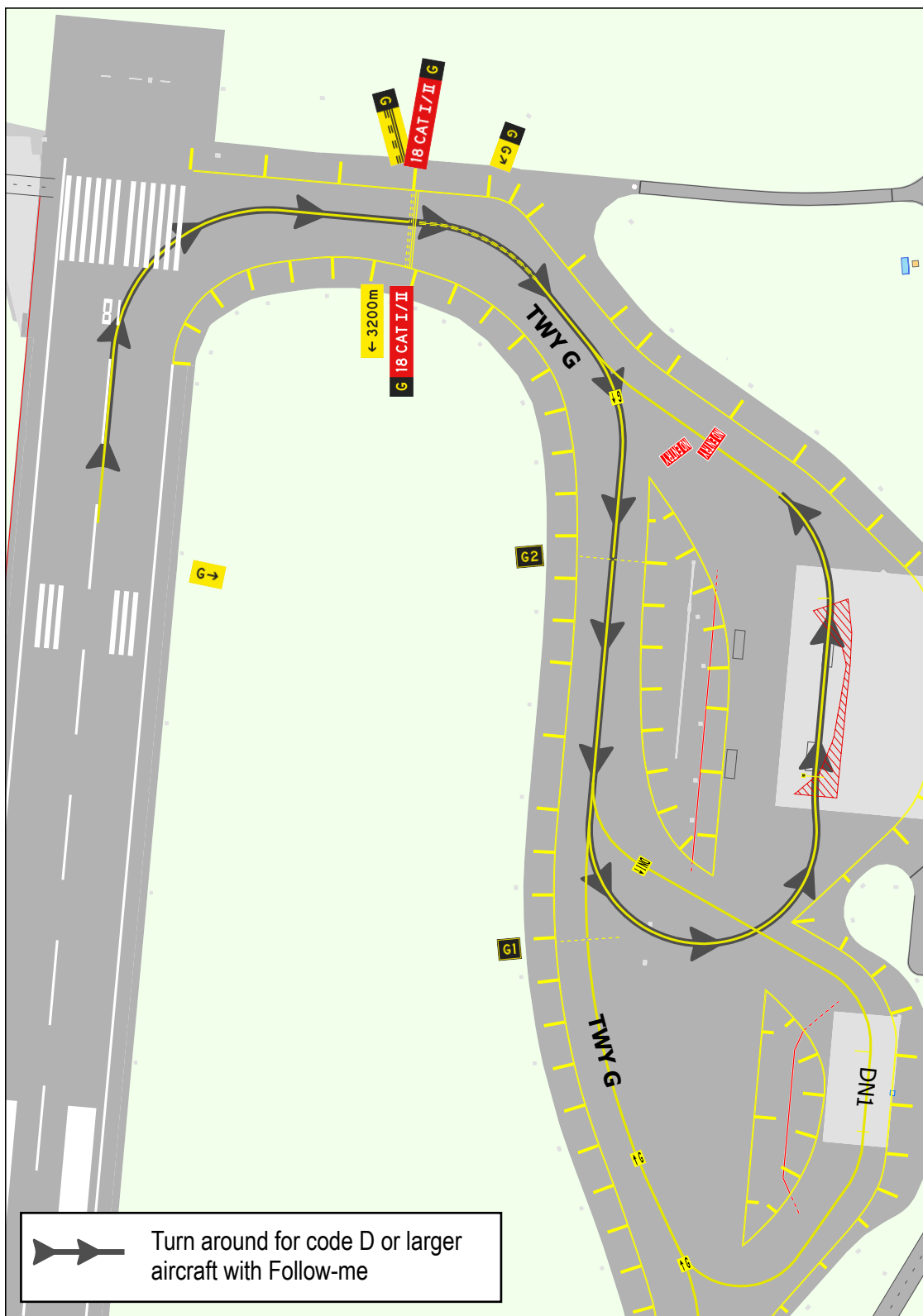
APRON	STAND	STANDARD TAXI ROUTES				MAX D-VALUE FOR AIR OR GROUND TAXI (M)
		ARR 18	DEP 18	ARR 36	DEP 36	
3	TLOF H313	Y-C-F-V-W	W-E-F-G	D-V-W	W-V-F-C	17.46
3	TLOF H314	Y-C-F-V-W	W-E-F-G	D-V-W	W-V-F-C	17.46
3	TLOF H315	Y-C-F-V-W	W-E-F-G	D-V-W	W-V-F-C	17.46
3	TLOF H316	Y-C-F-V-W	W-E-F-G	D-V-W	W-V-F-C	17.46

AIRAC AIP SUP 014/2026
APPENDIX 1

RIGA AERODROME (EVRA) – RESTRICTIONS
ON TWY E AND F

AIP LATVIA





AIS Latvijas gaisa satiksme

PAGE INTENTIONALLY LEFT BLANK